



Standard Practice for Sampling Forest Trees for Determination of Clear Wood Properties¹

This standard is issued under the fixed designation D5536; the number immediately following the designation indicates the year of original adoption or, in the case of revision, the year of last revision. A number in parentheses indicates the year of last reapproval. A superscript epsilon (ϵ) indicates an editorial change since the last revision or reapproval.

INTRODUCTION

The everyday use of wood for many different purposes creates a continual need for data on its mechanical properties. Small clear specimen testing to characterize a species has historically been employed for such property determination, and related methods of test are outlined in Methods [D143](#).

Because wood is a biological material, its mechanical properties are subject to considerable natural variation. Thus, the results of tests to evaluate the mechanical properties of a species depend to a great extent upon how the forest trees are sampled for test material. Ideally, if the results of mechanical property evaluations are to be representative of the forest sampled, probability sampling of materials such as outlined in Practice [E105](#) must be used. However, true probability sampling of the forest trees for determination of mechanical properties can be extremely complex and expensive because of the broad geographic range and topographic conditions under which a tree species grows. In some instances, direct probability sampling may be impractical, necessitating the need for alternative sampling procedures.^{2, 3}

1. Scope

1.1 This practice offers two alternative physical sampling procedures: cruciform sampling and random sampling. The choice of procedure will depend upon the intended use for the test results, the resources available for sampling and testing, and the availability of existing data on the mechanical properties and specific gravity of the species of interest.

1.2 A third procedure, double sampling, is included primarily by reference. This procedure applies the results of cruciform or random samples through correlation to improve or update property values.

1.3 *This standard does not purport to address all of the safety concerns, if any, associated with its use. It is the responsibility of the user of this standard to establish appropriate safety and health practices and determine the applicability of regulatory limitations prior to use.*

¹ This practice is under the jurisdiction of ASTM Committee [D07](#) on Wood and is the direct responsibility of Subcommittee [D07.08](#) on Forests.

Current edition approved Nov. 1, 2015. Published December 2015. Originally approved in 1994. Last previous edition approved in 2010 as D5536 – 94(2010). DOI: 10.1520/D5536-15.

² Bendtsen, B. A., Freese, F., and Ethington, R. L., "A Forest Sampling Method for Wood Strength," *Forest Products Journal*, Vol 20, No. 11, 1970, pp. 38–47.

³ Pearson, R. G., and Williams, E. J., "A Review of Methods for Sampling of Timber," *Forest Products Journal*, Vol 8, No. 9, 1958, pp. 263–268.

2. Referenced Documents

2.1 *ASTM Standards*:⁴

[D143 Test Methods for Small Clear Specimens of Timber](#)
[D2555 Practice for Establishing Clear Wood Strength Values](#)
[E105 Practice for Probability Sampling of Materials](#)

3. Significance and Use

3.1 This practice covers procedures of sampling for obtaining small clear wood specimens which, when tested in accordance with Methods [D143](#) and, in conjunction with full-size product tests, will provide mechanical properties for use in deriving design properties for lumber, panels, poles, house logs, and other products.

3.2 Data obtained by testing specimens sampled in accordance with these methods also provide information on the influence on mechanical properties of such factors as density, locality of growth, position in cross section, height in the tree, and moisture content.

3.3 Cruciform sampling is of principal value when information is desired on the influence on mechanical properties of

⁴ For referenced ASTM standards, visit the ASTM website, www.astm.org, or contact ASTM Customer Service at service@astm.org. For *Annual Book of ASTM Standards* volume information, refer to the standard's Document Summary page on the ASTM website.

height in the tree; of age or radial position in the tree; of rate of growth; the change from sapwood to heartwood; the relationships between mechanical properties and factors such as specific gravity; and making general comparisons between species for purposes of rating or selecting species for specific end-use products. Cruciform sampling does not provide unbiased estimates of mean values, percentile or other descriptive statistics, or a means of associating statistical confidence with estimates of descriptive statistics.

3.4 Double sampling is used when it is desired to improve or update existing estimates of mechanical property values that are the basis for establishing allowable design stresses for stress-graded lumber, plywood, poles and piling, and other wood products. The method involves predicting one property by carefully observing a well-correlated auxiliary property that is presumably easier or cheaper to measure. A sample estimate of the auxiliary property is obtained with a high degree of precision by representatively sampling the population. A smaller independent sample or a subsample of the large sample is used to establish a relationship between the auxiliary property and the property for which an estimate is desired. As applied to sampling a forest, double sampling has employed specific gravity to predict mechanical properties. The double-sampling method provides unbiased estimates of mean mechanical property values and an approximation method for estimating percentile values. Statistical confidence may be associated with the estimates of the means but not the percentile values.

3.5 Random sampling is used when probability estimates of descriptive statistics and property distributional characteristics are desired as the basis for establishing allowable design stresses for lumber and other stress-rated products. It is applicable when data for a species do not exist or when existing estimates are believed no longer applicable because of a changing forest character. Random sampling provides better probability estimates than double sampling and is less expensive and quicker if sampling and testing must be completed to establish mechanical property-specific gravity regressions for the double-sampling method.

4. Authentic Identification

4.1 The material shall be from trees selected in the forest by one qualified to identify the species and to select the trees. Where necessary, herbarium samples such as leaves, fruit, twigs, and bark shall be obtained to ensure positive identification.

5. Cruciform Sampling—Primary Method

5.1 The standard methods for preparing small clear specimens of timber, primary method, provide for cutting the log sections (divided into and identified as bolts) systematically into sticks of nominal 2½ by 2½ in. (63 by 63 mm) in cross section, that are later surfaced to provide the test specimens 2 by 2 in. (52 by 52 mm) in cross section, on which the system is based. These methods have served as a basis for the evaluation of the various mechanical and related physical properties of the clear wood of different species of wood. These

methods have been extensively used, and a large amount of data based on them have been obtained and published.

5.1.1 The 2 by 2-in. (52 by 52-mm) test specimen has the advantage that it embraces a number of growth rings, is less influenced by earlywood and latewood differences than smaller specimens, and is large enough to represent a considerable proportion of the material.

5.1.2 The choice of specimen size may be influenced by the objectives of sampling and by the rate of growth of the material. Radial property gradients are primarily influenced by age, and large specimens that encompass several rings may mask the age influence. Height gradients must be evaluated by specimens from the same annual ring because of age influence. Thus, small specimens are preferred for measuring both radial and height gradients. When the purpose of sampling is to estimate clear wood properties, large specimens that include a number of annual rings are preferred. Even with 2 by 2-in. (52 by 52-mm) specimens, fast rates of growth will result in few rings per specimen. Regardless of the purpose of sampling, the analysis and reporting of data may require careful consideration of the character of the specimen.

5.2 *Selection of Number of Trees*—For each species to be tested, select the number and the character of the trees to accomplish the purpose of the sampling. For traditional mechanical property data base development, a minimum of five trees have usually been selected that have been judged “representative” of the trees harvested of the species. Note that if unbiased estimates and statistical confidence statements are required, other methods are needed (Section 3).

5.3 *Selection and Number of Bolts*—The material of each species selected for test shall be representative of the clear, straight-grained wood in the merchantable bole of the tree. A traditional method of selection is shown in [Appendix X2](#). Note that the sampling permits varying the intensity of sampling by tree (in accordance with [Appendix X2](#)) if the resulting data will support the anticipated analysis. [X2.1](#) illustrates merchantable section and bolt labeling.

5.4 *Substitution of Flitches for Bolts:*

5.4.1 In cases where the logs or bolts are over 60 in. (1.5 m) in diameter, a single flitch 6 in. (15 cm) in thickness, taken through the pith representing the full diameter of the log, may be substituted, in the same length, for the full log or bolt specified in [5.3](#).

5.4.2 Where orientation of test specimen to geographic features is considered critical, flitch shall maintain the coordinates regarded as important in the specimen of [5.9](#).

5.5 *Selection for Site Representation*—Inferences in analysis that relate to geographic distribution or site-specific features must be anticipated in selecting both the sample numbers and sources. The number of trees shall conform to [5.2](#) and [5.3](#). If the analysis requires statistical inferences, random sampling (Section 7) is one method.

5.6 *Field Marking:*

5.6.1 Field marking procedures shall ensure identification of trees, bolts, and shipment. [Appendix X2](#) provides a traditional method.

5.6.2 If the orientation of test specimens to geographical or bolt features is critical, maintenance of cardinal point orientation is recommended.

5.7 *Field Descriptions:*

5.7.1 Complete field notes describing the material shall be fully and carefully made by the collector. These notes shall be sufficient to supply documentation similar to that in **Table X1.1**, with actual content chosen as appropriate for the objectives of the study.

5.7.2 Photographs of the standing trees selected should be taken when practicable.

5.8 *Preparation for Shipment*—Maintenance of moisture content of the material and of all labeling documentation is a requirement. Paragraph **X2.3** provides traditional guidelines.

5.9 *Sawing and Marking of Bolts and Test Sticks*—Sections of logs (consisting of two bolts) shall be marked and sawn into 2½ by 2½-in. (63 by 63-mm) sticks. Marking of bolts and sticks shall maintain continuity to the tree, and shipment. Consistency with **5.6** shall be maintained. Sections **X2.1** through **X2.4** document the traditional procedures.

5.10 *Matching for Tests of Dry Material:*

5.10.1 If one purpose of sampling is to provide comparison of green and dry properties, provisions may be made for matching of specimens within the tree. The traditional approach is as follows:

5.10.2 The collection of the material (Section **5**) has been arranged to provide for tests of both green and dry specimens that are closely matched by selection from adjacent parts of the same tree. The 8-ft (2.4-m) long sections, after being marked in accordance with **5.9**, shall be sawn and marked in 2½ by 2½-in. (63 by 63-mm) by 8-ft sticks. Each 2½ by 2½-in. by 8-ft stick shall then be cut into two 4-ft (1.2-m) pieces, making sure that each part carries the proper designation and bolt letter.

5.10.3 Some of the 2½ by 2½-in. by 4-ft (63 by 63-mm) by 1.2-m sticks from each 8-ft (2.4-m) section are to provide specimens to be tested green (unseasoned) and the remaining ones are to be dried and tested. To afford matching, the 4-ft sticks of one bolt shall be interchanged with the 4-ft sticks of the next adjacent bolt from the same tree to form two composite bolts, each being complete and being made of equal portions of the adjacent 4-ft bolts. The sticks from one of these composite bolts shall be tested green and those from the other shall be tested after drying. Thus, the sticks of each composite bolt shall be regarded as if they were from the same bolt. Paragraph **X2.5** illustrates a method of forming composite bolts.

5.10.4 The traditional procedure provides for end-to-end matching (end matching) of sticks to be tested dry with those to be tested green, which is to be preferred when practicable. If, because of the nature of the material, end matching is not practicable, side matching may be used.

6. Cruciform Sampling—Secondary Method

6.1 The cruciform secondary method is intended for use in evaluating the properties of wood only when relatively small trees, generally less than 12 in. (30 cm) in diameter when measured approximately 4½ -ft (1.37-m), diameter breast

height, are available to provide the test specimens and only when such trees because of crook, cross grain, knots, or other defects are of such quality that the longer clear, straight-grained specimens required by the primary method cannot reasonably be obtained. Whenever possible, the procedure for the primary method shall be used regardless of the size of trees. Since the procedure for the secondary method for many features, such as in selection and care of material, is identical with the primary method, the secondary method presented herewith are referenced to the primary method, and procedure is given only where it differs therefrom. For convenience the section numbers in the secondary method corresponds in the last two digits with the numbering of the primary method. Thus, Section **6** for the secondary method corresponds in subject matter to Section **5**.

6.1.1 Because of the cross-sectional size and the length of specimen required for some of the tests (30 in. (76 cm) for static and impact bending) it is, however, sometimes difficult to obtain test specimens in adequate number and entirely free of defects from bolts representing smaller trees, particularly trees under 12 to 15 in. (30 to 38 cm) in diameter. With increasing need for evaluating the properties of species involving smaller trees, and the increasing importance of second-growth timber that is expected to be harvested much before it reaches the sizes attained in virgin stands, there has developed a need for secondary methods of test in which at least the longer test specimens are smaller than 2 by 2 in. (52 by 52 mm) in cross section.

6.1.2 The exceedingly rapid rate of growth and corresponding wide annual rings in much second-growth material, together with the desirability of incorporating more than a single year's growth increment in a test specimen, has necessitated limiting the minimum cross section of test piece in these secondary methods to 1 by 1 in. (2.5 by 2.5 cm). Data analysis based on these small specimens of rapid growth rate wood is particularly vulnerable if the purpose of the sampling is to estimate total clearwood properties. See additional comments in **5.1.2**.

6.2 *Selection and Number of Trees*—For each species to be tested, at least ten trees representative of the species shall be selected.

6.3 *Selection and Number of Bolts:*

6.3.1 See **5.3**, noting that, if using **X2.1.1** as a guide, the minimum number of trees is increased to ten. If information on variation with height is desired, use of two trees is recommended *for that purpose* in this secondary method.

6.3.2 From the trees not used for study of variation with height, take the 8-ft (2.4-m) section (c-d bolts) next above the 8-ft butt log if this section falls within the merchantable length of the tree; otherwise, take the 8-ft section comprising the two highest standard bolts (multiples of 4 ft (1.2 m)) within the merchantable length.

6.4 *Substitution of Flitches for Bolts*—For the small trees to which this secondary method is applicable, bolts representing the full diameter of the log are required, and flitches shall not be substituted for bolts.

6.5 *Selection for Important Species*—For important species of wide geographical distribution, test material shall be selected from two or more localities or sites. The number of trees of a species selected from each site or locality and within tree sampling shall conform to the requirements of 6.2 and 6.3.

6.6 *Field Marking*—See 5.6.

6.7 *Field Descriptions*—See 5.7.

6.8 *Preparation for Shipment*—See 5.8.

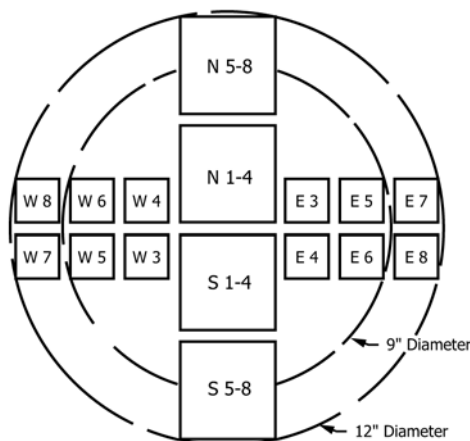
6.9 *Sawing and Marking of Bolts and Test Sticks*—All bolts shall be marked on the top end into 2½-in. (63-mm) or ¼-in. (32-mm) squares as shown in Fig. 1, and sawed into nominal 2½ or ¼-in. sticks. X2.6 may be used for guidance.

6.10 *Matching for Tests of Dry Material*:

6.10.1 If one purpose of sampling is to provide comparison of green and dry properties, provisions may be made for matching of specimens within the tree. The following sections relate the traditional approach.

6.10.2 The collection of material has been arranged to provide for tests of both green and dry specimens that are closely matched by selection from adjacent parts of the same tree. The 8-ft (2.4-m) long sections, after being marked in accordance with 6.9, shall be sawed into 2½ by 2½-in. (63 by 63-mm) or ¼ by ¼-in. (32 by 32-mm) by 8-ft (2.4-m) sticks, and numbered and lettered in accordance with 6.9. Each 8-ft stick shall then be cut into two 4-ft (1.2-m) pieces, making sure that each part carries the proper designation and bolt letter. If the 8-ft section is not straight, it may be found more desirable to cut it into 4-ft lengths before cutting the 2½ or ¼-in. square pieces. If this is done, care shall be taken to secure end-matched sticks in the two 4-ft bolts and to ensure that each part carries the proper designation and bolt letter.

6.10.3 Composite bolts shall be formed in accordance with the principles of 5.10.3 and 5.10.4. Section X2.7 may be used for guidance.



NOTE 1—Sticks cut from the N-S axis shall be 2½ by 2½ in. (63 by 63 mm) when green. Sticks cut from the E-W axis shall be ¼ by ¼ in. (32 by 32 mm) when green.

FIG. 1 Sketch Showing Method of Cutting Up the Bolt and Marking the Sticks for the Secondary Methods

7. Random Sampling

7.1 The general principles of probability sampling of materials (Practice E105), including setting sample size, collecting sample material in an objective way, and data analysis, apply to sampling the forest trees for determination of mechanical properties. Generally, sample size is dictated by the precision desired in the property estimates. Sampling the forest trees for determination of mechanical properties, however, presents unique problems in maintaining objectivity in sampling because the sample population, for practical purposes, is essentially infinitely large, and because of problems associated with broad geographic ranges and inaccessible topography.² The number of locations, their growth conditions, and the trees per location enter the picture also. For a given sample size, one sample per tree probably provides the most precision. However, if the cost of selecting a tree, and finding, cutting, and bringing it out of the woods is high, then it may be more economical to sample fewer trees but more intensively within a tree or within a location, reflecting the need to increase the total numbers of specimens tested to achieve the same precision. Thus, if it is desired to do a sampling experiment as economically as possible, the sample size depends not only on the precision of estimates desired but also on within and between tree variation, within and between location variation, and the cost of sampling versus the cost of testing individual samples. The experimental design should seek the optimum combination of sampling intensity at each stage of sampling.

7.1.1 The principles of random sampling can be followed although actual sampling procedures may differ. Details will vary according to objectives and the physical nature of the sampling. Appendix XI provides an example which approximates the methods used in North America for some of the entries in Method D2555. Important aspects of the statistics when designing a random sampling procedure are covered, with specific discussions of procedures used in Australia and England.

7.2 Many of the principles of the cruciform method (identification in Section 4; field marking, descriptions, preparation for shipment, sawing and marking of sticks, dry/green matching in Section 5) provide guidance for orderly preparation of specimens when following the random sampling methods.

8. Double Sampling

8.1 Specific gravity has been the independent variable traditionally employed to predict mechanical properties through double sampling. A reliable estimate of the mean specific gravity for a species is obtained by intensively sampling the forest population of a species. This value is substituted into regression equations to obtain estimates of mean mechanical property values. The regression equations, relating mechanical properties and specific gravity, are generally calculated from existing data sets, see Sections 5 and 7 and Methods D143, in which specific gravity and the mechanical property were measured on the same specimen, although in some instances supplemental sampling and testing may be needed to establish reliable regression. Paragraph 4.1.4.2 of Method D2555 suggests that a correlation coefficient of at least 0.50 is desirable to provide satisfactory property estimates by

double sampling. Method **D2555**, Section 4.1, presents a thorough treatise on the double sampling method.

9. Keywords

9.1 clear wood; forest; forest trees; sampling

APPENDIXES

(Nonmandatory Information)

X1. EXAMPLE OF AN APPROPRIATE RANDOM SAMPLING PROCEDURE

X1.1 Sample Observational Unit—The cross section of a standard strength specimen (primary method) is 2 in. (52 mm) square, and the length may vary from 6 to 30 in. (15 to 76 cm), depending upon the particular test involved (Methods **D143**). Thus, the sampling unit is a 2-in.-square stick of wood long enough to supply one test specimen of each type to be evaluated. For example, if static bending, compression parallel-to-grain, compression perpendicular-to-grain, shear, and hardness characteristics of a timber species are to be evaluated, specimen lengths of 30, 8, 6, 2½ in. (76, 20, 15, and 6 cm), respectively, are required or a total length of actual material of 52½ in. (133 cm). Allowing extra material for machining waste, annual ring orientation, and the elimination of growth defects, the sample unit is a stick about 2½ by 2½ in. (63 by 63 mm) in cross section and perhaps 5 ft (1.5 m) long, the actual length depending upon the quality of the material. If the properties are to be evaluated in both a green and a dry condition, the sample unit would be a pair of such sticks.

X1.2 Population—The sample population in the example could be defined as all possible 2½ by 2½-in. by 5-ft (63 mm by 1.52 m) clear, straight-grained sticks that can be cut from all trees in all stands of the species of interest. However, “all trees” may not necessarily be the population of interest. For example, if the purpose of a sampling experiment is to develop estimates of mechanical properties as a basis for design stress for structural lumber, the trees of interest may be limited to those of sawtimber size. The population for sampling might then be defined as all possible 2½-in. square by 5-ft long sticks that can be cut from sawtimber-sized trees in stands that can be harvested now or in the near future by contemporary logging techniques.

X1.3 Random Selection—A method is outlined in this section for collecting a random sample of n observations of a species. The procedure involves several stages in which selection is made at each stage, with probability approximately proportional to volume (ppv). This means, for example, that a region having a high volume of timber has a greater chance of being selected than a region of lower volume. Likewise, large trees or large bolts have greater probability of selection than smaller ones. The example assumes that detailed estimates of timber volume are available for the development of the sampling plan. If timber volume estimates are not available, some other system must be used to ensure objectivity or

representativeness in sampling.

X1.3.1 Selection of Areas—To select areas to be sampled, timber volume estimates are tabulated for the species by the smallest area unit for which volume information is available throughout the growth range of the species. Then n areas, the number of test species desired, are selected with ppv. Selection is with replacement, that is, the same area can be selected more than once. To illustrate the selection of areas with ppv, consider the five example area volumes of **Table X1.1**. Five areas with volumes and cumulative volumes are available, and the sample size n is six.

X1.3.1.1 From a table of random numbers, six numbers from one through the cumulative volume total 26 320 are drawn. Each random number identifies an area to be sampled. If a random number is equal to or smaller than the cumulative volume of area x but larger than the cumulative volume of the preceding area, then an observation from area x is included in the sample. To illustrate, six random numbers and the corresponding areas (in parentheses) might be: 19 162 (C), 26 263 (E), 6682 (B), 1785 (B), 3879 (B), and 8253 (B). It is noted that in the United States areas for which volume estimates are available may number in the thousands, and the probability is small that the same area will be drawn more than once, even for large sample sizes.

X1.3.2 Selection of Location—For each area thus selected, sampling locations are randomly drawn by any convenient scheme. This can be done by placing a numbered grid over a map or by assigning numbers to townships, sections, or quarter sections and then selecting numbers at random. Grid intersections or quarter corners can arbitrarily be designated as the sampling location or plot. Another technique is to simply draw random pairs of coordinates to the nearest minute, ½ minute, or whatever resolution is desired. This will depend upon sampling conditions. In some areas, particularly in rugged terrain, a field technician may have considerable difficulty

TABLE X1.1 Area Volumes for Illustration of Selection of Sample Areas With PPV

Area	Volume, 1000 ft ³	Cumulative volume, 1000 ft ³
A	350	350
B	14 070	14 420
C	4970	19 390
D	840	20 230
E	6090	26 320

precisely locating the sampling location on the ground. Therefore the researcher may decide that a sampling grid finer than one or two miles (km) is not practical and that significant bias will not be introduced in the experiment with this size grid. Selecting grid intersections or paired coordinates at random with equal probability shifts the sampling scheme from selection with ppv to volume to probability proportional to area. If the distribution of the timber is uniform throughout an area, the two systems are comparable. This is usually not the case, however, and selection in proportion to area tends to disproportionately favor the units in thin or peripheral stands. This is the reason the smallest areas for which volume estimates are available are used. This tends to minimize the sampling error because smaller areas tend to have more uniform timber volume distribution.

X1.3.3 Selection of Tree—To select a tree from each location, a sample plot center is first objectively located or defined. One means is for the field technician to locate the sampling location as accurately as possible with reference to the selected coordinates and then move a preselected distance (perhaps 200 yd (180 m)) on a random azimuth. The new location is then the plot center. From the plot, a tree is then randomly selected with ppv volume, using a basal area prism (a 3.03-diopter prism has proven successful for this purpose). Standing on the plot center and starting with a north sighting (or any other preselected or randomly selected azimuth) and turning clockwise, the first qualifying tree is selected that, when viewed at breast height through the prism, overlaps any part of the view seen above the prism. Trees are rejected if they do not meet minimum diameter requirements defined by the experimental plan.

X1.3.4 Selection of Bolt—The selected tree is felled and bolts of length equal to the observational unit are marked off up to a minimum top diameter defined in the experiment. A 6-in. (15-cm) diameter is probably the minimum practical diameter for obtaining a 2½-in. (63 mm) square stick located to one side of the pith. The diameter is measured at the upper end of each bolt, the diameters are squared, and a single bolt is randomly selected with probability proportional to squared diameters

(equivalent to ppv). If the cumulative squared diameter of each bolt is expressed as a percentage of the cumulative squared diameter of the top bolt, selection may be made by use of random numbers from one through 100. This enables the researcher to preselect bolt numbers in the laboratory. To illustrate, consider a tree with four qualifying bolts with diameters, squared diameters, and cumulative squared diameters as indicated in **Table X1.2**. To select a bolt, the random number generated is rounded up to the next cumulative percentage. For example, if the random number generated is 59, it would be rounded up to 62 and bolt No. 2 would be taken.

X1.3.5 Selection of Sticks—A random 2½-in. (63-mm) thick flitch is sawn from bark to bark centered on the pith. A ½-in. (13 mm) square stick is then located on the flitch by any appropriate ppv technique. One method is to randomly select the location with reference to the pith with probability of selection in proportion to the squared radial distance from the pith (use a process comparable to that for selecting bolts). The side from the pith should be selected by chance. If properties are desired in both the green and the air-dry moisture condition, a second stick is selected and cut in the same manner from the opposite side of the pith.

X1.3.6 Selection of Location in Stick—Variation in properties along the length of the sample sticks is relatively small so that the individual mechanical property specimens need not be randomly located in the sticks. Rather, they should be located so as to most efficiently use the material, that is, to allow for cutaway of knots and other defects between specimens.

TABLE X1.2 Calculation of Cumulative Percentage Squared Diameter for a Sample Tree

Bolt	Diameter, in.	Squared Diameter, in. ²	Cumulative Squared Diameter, in. ²	Cumulative Percentage, %
1	13	169	169	36
2	11	121	290	62
3	10	100	390	83
4	9	81	471	100

X2. TRADITIONAL METHODS OF ORGANIZING, LABELING, AND PREPARING CRUCIFORM SAMPLES

X2.1 Selection and Numbering of Bolts

X2.1.1 For Variation with Height Within a Tree—From one tree of each group of five, select 8-ft (2.4-m) sections (each section representing two 4-ft (1.2-m) bolts) from various heights to afford information on the variation of properties with height in the tree, as indicated in **Fig. X2.1** and in **Table X2.1**.

X2.1.2 For Other Trees—From the other trees called for in 5.3.1 take the 8-ft (2.4-m) section (**Note X2.1**) (c-d bolt) next above the 8-ft butt log.

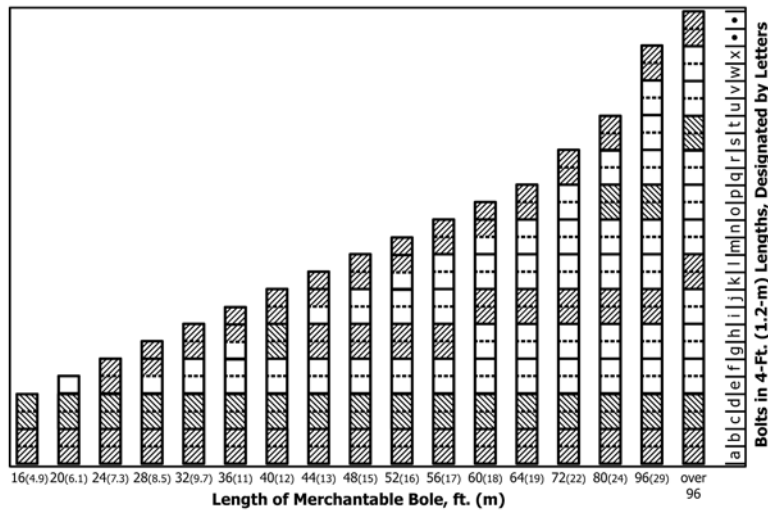
NOTE X2.1—The 8-ft (2.4-m) lengths specified are intended to provide test material in sticks of this net length. It is recommended that the

sections be cut in the woods to 9-ft (2.7-m) lengths to allow for trimming, etc.

X2.2 Field Marking

X2.2.1 Tree Designation—Identify each tree with an arabic number, the numbering in any given shipment consecutive for trees of a given species.

X2.2.2 Bolt Designation—Each 4 ft (1.2 m) of length of a tree or log is considered a “bolt.” Bolts are designated by small letters, beginning with the letter *a* for the 4-ft section next above the stump. Bolt letters, therefore, indicate position with respect to height in the tree.



Letters a, b, c, etc. indicate 4-ft (1.2-m) units of the merchantable length, called bolts, and designate height in the tree.

* Indicates bolts to be taken from the top of the merchantable length, to be lettered appropriately in accordance with their actual height in the tree.

FIG. X2.1 Diagram Indicating Number and Position of Bolts to Be Collected from Trees Having Boles of Various Merchantable Lengths, to Evaluate Effect of Height in Tree on Properties of the Wood

TABLE X2.1 Bolt Identification

NOTE 1—Four-foot bolts are to be selected. For explanation of letter designation of bolts, see A2.2.

Length of Merchantable Section, ft (m)	
16 (4.9)	a, b, c, d
20 (6.1)	a, b, c, d
24 (7.3)	a, b, c, d; e
28 (8.5)	a, b, c, d; f, g
32 (9.7)	a, b, c, d; g, h
36 (11)	a, b, c, d; h, i
40 (12)	a, b, c, d; g, h; i, j
44 (13)	a, b, c, d; g, h; j, k
48 (15)	a, b, c, d; g, h; k, l
52 (16)	a, b, c, d; g, h; l, m
56 (17)	a, b, c, d; g, h; m, n
60 (18)	a, b, c, d; i, j; n, o
64 (19)	a, b, c, d; i, j; o, p
72 (22)	a, b, c, d; i, j; q, r
80 (24)	a, b, c, d; i, j; o, p; s, t
96 (29)	a, b, c, d; i, j; o, p; w, x
Over 96	a, b, c, d; k, l; s, t; and last two bolts (each 4 ft (1.2 m) in length) at top of merchantable length

X2.2.3 Marking—The tree number and bolt designation is plainly marked upon each log selected by the collector. Thus the 16-ft (4.8-m) butt log of Tree No. 2 would be designated 2abcd. Steel dies are recommended for marking the butt end of the logs.

X2.2.4 Cardinal Point—The north side of each log is indicated in some convenient manner.

X2.2.5 Shipment Number—All material collected from a given locality and shipped at one time is given a shipment number or other designation.

X2.3 Preparation for Shipment

X2.3.1 Control of Moisture—The bark will be left on each log, and care shall be taken to keep the bark intact. The end of the logs shall be carefully painted to retard or prevent end drying and end checking.

X2.3.2 Records—Records shall be made of the shipment routing, bill of lading, kind of shipment, date of shipment, and condition of material when shipped. Records shall also be made of date of receipt of shipment at destination, its condition, and method of storage.

X2.4 Sawing and Marking of Bolts, Flitches, and Sticks

X2.4.1 Bolts—All bolts shall be marked on the top end into 2½ by 2½-in. (63 by 63-mm) squares as shown in Fig. X2.2, and sawed into nominal 2½ by 2½-in. sticks. The letters, N, E, S, and W indicate the cardinal points.

X2.4.2 Flitches—When flitches are substituted for bolts (see 5.4), the same general marking and numbering scheme of X2.4.1 shall be followed insofar as it is applicable.

X2.4.3 Sticks—All test sticks shall bear the shipment number, the tree number, stick number, and bolt designation, to

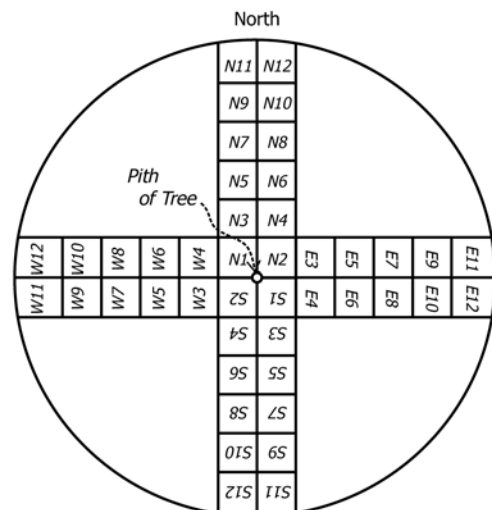


FIG. X2.2 Sketch Showing Method of Cutting Up the Bolt and Marking the Sticks

be known respectively as Shipment No., Piece No., Stick No., and mark. Thus, 400-1-N4d represents Stick N4 of Bolt d, Tree 1, Shipment 400. Figs. X2.2 and X2.3 illustrate a section and resulting test sticks marked.

**X2.5 Division of Sticks to Form Composite Bolts—
Primary Method**

X2.5.1 *Division for Green and Dry Tests*—The division of sticks into composite bolts, part to be tested green and part to be air dried and tested, shall be made in accordance with Table X2.2, in which the numbers refer to stick numbers:

X2.5.2 *Other Bolts*—The selection of sticks from other 8-ft (2.4-m) bolts of the tree to form the composite bolts to be tested green and to be air dried and tested shall be made in accordance with the system as indicated in X2.5.1.

X2.5.3 As an example of composite bolts, assume that the cross section, Fig. X2.3, represents the end of an 8-ft (2.4-m) section comprising the c and d bolts. The following sticks are selected for the composite bolt to be tested green: N1c, N2d, N3d, N4c, N5c, N6d, N7d, N8c, N9c, N10d, N11d, N12c; E3d, E4c, E5c, E6d, E7d, E8c, E9c, E10c, E11d, E12c; S1c, S2d, S3d, S4c, S5c, S6d, S7d, S8c, S9c, S10d, S11d, S12c; W3d, W4c, W5c, W6d, W7d, W8c, W9c, W10d, W11d, W12c. The following sticks are selected for the composite bolt to be air dried and tested: N1d, N2c, N3c, N4d, N5d, N6c, N7c, N8d, N9d, N10c, N11c, N12d; E3c, E4d, E5d, E6c, E7c, E8d, E9d, E10c, E11c, E12d; S1d, S2c, S3c, S4d, S5d, S6c, S7c, S8d, S9d, S10c, S11c, S12d; W3c, W4d, W5d, W6c, W7c, W8d, W9d, W10c, W11c, W12d.

**TABLE X2.2 Schedule for Forming Composite Bolts—
Primary Method**

Selection of Sticks from a and b Bolts			
<i>Composite Bolt to Be Tested Green:</i>			
Bolt a 1	4, 5	8, 9	
Bolt b	2, 3	6, 7	10, etc.
<i>Composite Bolt to Be Air-Dried and Tested:</i>			
Bolt a	2, 3	6, 7	10, etc.
Bolt b 1	4, 5	8, 9	
Selection of Sticks from c and d Bolts			
<i>Composite Bolt to Be Tested Green:</i>			
Bolt c 1	4, 5	8, 9	
Bolt d	2, 3	6, 7	10, etc.
<i>Composite Bolt to Be Air Dried and Tested:</i>			
Bolt c	2, 3	6, 7	10, etc.
Bolt d 1	4, 5	8, 9	
Selection of Sticks from e and f Bolts			
<i>Composite Bolt to Be Tested Green:</i>			
Bolt e 1	4, 5	8, 9	
Bolt f	2, 3	6, 7	10, etc.
<i>Composite Bolt to Be Air Dried and Tested:</i>			
Bolt e	2, 3	6, 7	
Bolt f 1	4, 5	8, 9	10, etc.

**X2.6 Sawing and Marking of Bolts and Test Sticks—
Secondary Method**

X2.6.1 The procedures of X2.4 form the basis for the secondary methods, revised for smaller sticks.

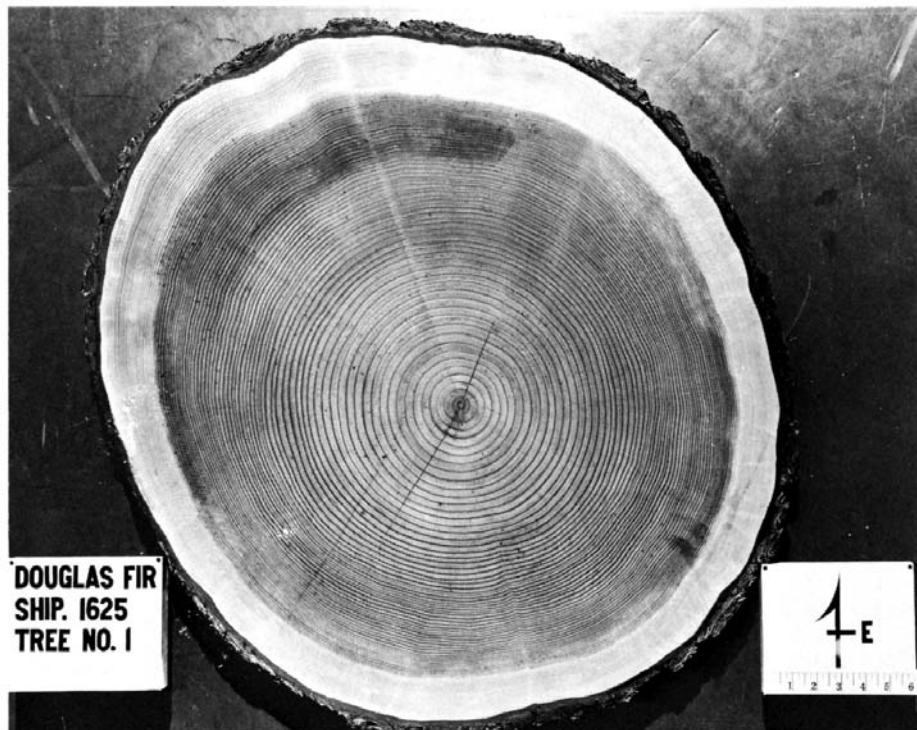


FIG. X2.3 Section of Log Selected for Test Method

X2.6.2 For trees that are not circular or for intermediate sizes where more than the required distance is available, sticks may be moved outward toward the periphery to whatever position between the pith and bark would produce sticks with a minimum of defects. For example, in trees 9 to 12 in. (23 to 30 cm) in diameter, sticks N1-4 and S1-4 could be moved outward as much as 1½ in. (38 mm) if desired. All test sticks shall bear the shipment number, the tree number, stick number, orientation (if critical), and bolt designation.

X2.7 Division of Sticks to Form Composite Bolts— Secondary Method

X2.7.1 The division of sticks into composite bolts, part to be tested green and part to be air dried and tested, may be made in accordance with **Table X2.3** in which the numbers refer to stick numbers.

X2.7.2 As an example of composite bolts, assume that the full cross section, **Fig. X2.2**, represents the end of an 8-ft (2.4-m) section comprising the *c* and *d* bolts. The following sticks are selected for the composite bolt to be tested green:

**TABLE X2.3 Schedule for Forming Composite Bolts—
Secondary Method**

<i>Composite Bolts (ab, cd, etc.) to Be Tested Green:</i>								
Lower bolt	N1-4,	S5-8,	E4,	E5,	E8,	W4,	W5,	W8
Upper bolt	S1-4	N5-8,	E3,	E6,	E7,	W3,	W6,	W7
<i>Composite Bolt (ab, cd, etc.) to Be Air Dried and Tested:</i>								
Lower bolt	S1-4,	N5-8,	E3,	E6,	E7,	W3,	W6,	W7
Upper bolt	N1-4,	S5-8,	E4,	E5,	E8,	W4,	W5,	W8

2 ½ by 2 ½ – in. (63 by 63 – mm) sticks:

N1 – 4c, N5 – 8d, S1 – 4d, S5 – 8c

1 ¼ by 1 ¼ – in. (32 by 32 – mm) sticks:

E3d, E4c, E5c, E6d, E7d, E8c, W3d, W4c, W5c, W6d, W7d, W8c

The following sticks are selected for the composite bolt to be air dried and tested:

1 ¼ by 1 ¼ – in. (32 by 32 – mm) sticks:

E3c, E4d, E5d, E6c, E7c, E8d, W3c, W4d, W5d, W6c, W7c, W8d

2 ½ by 2 ½ – in. (63 by 63 – mm) sticks:

N1 – 4d, N5 – 8c, S1 – 4c, S5 – 8d

ASTM International takes no position respecting the validity of any patent rights asserted in connection with any item mentioned in this standard. Users of this standard are expressly advised that determination of the validity of any such patent rights, and the risk of infringement of such rights, are entirely their own responsibility.

This standard is subject to revision at any time by the responsible technical committee and must be reviewed every five years and if not revised, either reapproved or withdrawn. Your comments are invited either for revision of this standard or for additional standards and should be addressed to ASTM International Headquarters. Your comments will receive careful consideration at a meeting of the responsible technical committee, which you may attend. If you feel that your comments have not received a fair hearing you should make your views known to the ASTM Committee on Standards, at the address shown below.

This standard is copyrighted by ASTM International, 100 Barr Harbor Drive, PO Box C700, West Conshohocken, PA 19428-2959, United States. Individual reprints (single or multiple copies) of this standard may be obtained by contacting ASTM at the above address or at 610-832-9585 (phone), 610-832-9555 (fax), or service@astm.org (e-mail); or through the ASTM website (www.astm.org). Permission rights to photocopy the standard may also be secured from the Copyright Clearance Center, 222 Rosewood Drive, Danvers, MA 01923, Tel: (978) 646-2600; http://www.copyright.com/