



# Standard Test Methods for Wood-Based Structural Panels in Compression<sup>1</sup>

This standard is issued under the fixed designation D3501; the number immediately following the designation indicates the year of original adoption or, in the case of revision, the year of last revision. A number in parentheses indicates the year of last reapproval. A superscript epsilon ( $\epsilon$ ) indicates an editorial change since the last revision or reapproval.

*This standard has been approved for use by agencies of the U.S. Department of Defense.*

## 1. Scope

1.1 These test methods cover the determination of the compression properties of wood-based structural panels. Wood-based structural panels in use include plywood, waferboard, oriented strand board, and composites of veneer and of wood-based layers.

1.2 *Method A, Compression Test for Small Specimens*—This method is applicable to small specimens that are uniform with respect to elastic and strength properties. Two types of compression tests are employed: one to evaluate both elastic and compressive strength properties, and the second to evaluate maximum compressive strength only.

1.3 *Method B, Compression Test for Large Specimens*—This method employs large specimens and responds well to manufacturing variables and growth characteristics that influence compression properties of structural panels.

1.3.1 This method is intended for the following:

1.3.1.1 Comparative tests of structural panels,

1.3.1.2 Evaluating the effects of moisture content on strength properties of structural panels,

1.3.1.3 Determining the strength properties of structural panels, and

1.3.1.4 Evaluating the effects of raw material and manufacturing variables on compression properties of structural panels.

1.4 The values stated in inch-pound units are to be regarded as standard. The values given in parentheses are mathematical conversions to SI units that are provided for information only and are not considered standard.

1.5 *This standard does not purport to address all of the safety concerns, if any, associated with its use. It is the responsibility of the user of this standard to establish appropriate safety and health practices and determine the applicability of regulatory limitations prior to use.*

<sup>1</sup> These test methods are under the jurisdiction of ASTM Committee D07 on Wood and are the direct responsibility of Subcommittee D07.03 on Panel Products.

Current edition approved Nov. 1, 2011. Published November 2011. Originally approved in 1976. Last previous edition approved in 2000 as D3501 – 05a. DOI: 10.1520/D3501-05aR11.

## 2. Referenced Documents

2.1 *ASTM Standards*:<sup>2</sup>

D2395 Test Methods for Density and Specific Gravity (Relative Density) of Wood and Wood-Based Materials

D4442 Test Methods for Direct Moisture Content Measurement of Wood and Wood-Based Materials

## 3. Significance and Use

3.1 These methods determine the compressive strength of structural panels in response to stresses acting in the plane of the panel.

3.2 *Method A*—This method is applicable to structural panels of uniform properties within a panel. It is useful for evaluating plywood of clear, straight-grained veneers, and determining the effect of chemical or preservative treatments, construction, principal direction with respect to direction of stress, and other variables that are expected to uniformly influence the panel.

3.3 *Method B*:

3.3.1 The compressive properties obtained by this method are a reliable approximation of the strength of a full-size panel, and are intended for use in design.

3.3.2 The compressive properties are influenced by buckling; however, this effect can be eliminated in this test by restraining the edges of the specimens.

3.4 It is recommended that where comparisons are to be made, that the same method and specimen size be used throughout. This is because the volume of material included in a test specimen can influence the compressive strength regardless of whether the material properties are uniform throughout the sheet or vary widely due to the presence of growth or manufacturing features.

## 4. Control of Moisture Content

4.1 Condition structural panel samples to be tested at a specific moisture content or relative humidity to approximate

<sup>2</sup> For referenced ASTM standards, visit the ASTM website, [www.astm.org](http://www.astm.org), or contact ASTM Customer Service at [service@astm.org](mailto:service@astm.org). For *Annual Book of ASTM Standards* volume information, refer to the standard's Document Summary page on the ASTM website.

constant weight in controlled atmospheric conditions before testing. For panels used under dry conditions, a relative humidity of  $65 \pm 2\%$  at a temperature of  $68 \pm 6^\circ\text{F}$  ( $20 \pm 3^\circ\text{C}$ ) is preferred.

## 5. Variables Influencing the Compressive Properties of Structural Panels

5.1 *Moisture Content*—Cut a moisture content sample having minimum area of  $2\text{ in.}^2$  ( $13\text{ cm}^2$ ) from the clear areas of the specimen and weigh immediately after each test. Moisture content samples from large specimens of Method B shall have minimum area of  $8\text{ in.}^2$  ( $52\text{ cm}^2$ ). If inspection of the edges of a plywood panel reveals the presence of a knot in any ply, select a second sample. Moisture content samples also serving as specific gravity samples shall be free of voids. Moisture content determinations shall be made in accordance with Test Methods **D4442**.

5.2 *Specific Gravity*—Determine specific gravity in accordance with Test Methods **D2395**. The specimen may be the same as that for moisture content determination but must have volume of at least  $1\text{ in.}^3$  ( $16\text{ cm}^3$ ) if from small specimens, and at least  $3\text{ in.}^3$  ( $49\text{ cm}^3$ ) if from large specimens, and be free of visible knots or voids.

### METHOD A—COMPRESSION TEST FOR SMALL SPECIMENS

#### 6. Direction of Grain, Fibers, or Layers

6.1 The direction of the individual plies, laminations, or layers shall be parallel, perpendicular, or inclined at any other required angle to the length of the test specimen.

#### 7. Test Specimen

7.1 The test specimen shall be rectangular in cross section. The thickness, width, and length of each specimen shall be measured to an accuracy of not less than  $\pm 0.3\%$  or  $0.001\text{ in.}$  ( $0.02\text{ mm}$ ), whichever is larger.

7.2 When tests to evaluate both elastic and compressive strength properties are required, the size of the specimens shall be as follows:

7.2.1 *For Material Over  $\frac{1}{4}\text{ in.}$  (6 mm) in Thickness*, the specimens shall have a thickness equal to that of the material and the width shall be a minimum of  $1\text{ in.}$  ( $25\text{ mm}$ ), but not less than the thickness. The length shall be not greater than seven times the least cross-sectional dimension.

7.2.2 *For Material  $\frac{1}{4}\text{ in.}$  (6 mm) or Less in Thickness*, the specimen shall have the following dimensions: thickness equal to that of the material; the width nominally  $1\text{ in.}$  ( $25\text{ mm}$ ), and a length of  $4\text{ in.}$  ( $100\text{ mm}$ ). Such specimens shall be supported laterally throughout the test.

7.2.3 When tests to evaluate maximum compressive strength only are required, an alternative type of specimen  $4\text{ in.}$  ( $100\text{ mm}$ ) in width and a length equal to six times the thickness may be used.

7.2.4 The end surfaces of the specimen shall be smooth and parallel to each other and at right angles to the length.

## 8. Evaluation of Both Compressive Strength and Elastic Properties

8.1 Support laterally test specimens  $\frac{1}{4}\text{ in.}$  ( $6\text{ mm}$ ) or less in thickness intended for use in obtaining load deformation data to prevent buckling during the test, but do not exert undue pressure against the sides of the specimen. This support shall not measurably restrain the normal compressive deformation under load. A satisfactory method of providing lateral support is illustrated in **Fig. 1**, and a detailed design of this apparatus is shown in **Fig. 2**.

## 9. Loading Procedure

9.1 Apply the load through a spherical bearing block preferably of the suspended, self-aligning type. Apply the load with a continuous motion of the movable head so as to cause failure within 3 to 10 min after initiation of loading. A rate of  $0.003\text{ in./in.}$  ( $\text{mm/mm}$ ) of length of the specimen per minute within a permissible variation of  $\pm 25\%$  has usually proved satisfactory.

9.2 Measure the elapsed time from initiation of loading to maximum load and record to the nearest  $\frac{1}{2}\text{ min.}$

## 10. Load-Deformation Curves

10.1 Take data for load-deformation curves to determine the modulus of elasticity and the proportional limit. Choose increments of load so that not less than 12 readings of load and deformation are taken to the proportional limit. Read the deformation to the nearest  $0.0001\text{ in.}$  ( $0.002\text{ mm}$ ). Attach compressometers over the central portion of the length of the specimen with the points of attachment not less than  $\frac{3}{4}\text{ in.}$  ( $18\text{ mm}$ ) from the specimen ends. **Fig. 3** shows a type of Lamb's roller compressometer, with a  $2\text{-in.}$  ( $50\text{-mm}$ ) gage length is suitable for specimens  $3\frac{1}{2}$  to  $6\text{ in.}$  ( $90$  to  $150\text{ mm}$ ) in length. A suitable arrangement of a Martin's mirror having a  $2\text{-in.}$  ( $50\text{-mm}$ ) gage length for measuring deformations of laterally supported specimens is illustrated in **Fig. 1**.

## 11. Alternative Test for Evaluation of Maximum Compressive Strength Only

11.1 In the alternative test for the evaluation of maximum compressive strength only, apply the load through a spherical loading block with a continuous rate of cross-head movement so as to produce failure within 3 to 10 min after initiation of loading. A loading rate of  $0.003\text{ in./in.}$  ( $\text{mm/mm}$ ) of length per minute is suggested. The loading rate shall be modified if times fall outside the 3 to 10-min range. Record the maximum crushing force and calculate the maximum crushing stress.

### METHOD B—COMPRESSION TEST FOR LARGE SPECIMENS

#### 12. Test Specimens

12.1 Specimens shall be precisely cut with all adjacent edges at right angles. The dimension of the specimen shall be  $7\frac{1}{2}\text{ in.}$  ( $190\text{ mm}$ ) wide by  $15\text{ in.}$  ( $381\text{ mm}$ ) long measured to an accuracy of not less than  $\pm 0.3\%$ .

12.2 To eliminate buckling, the following length-to-thickness ratios shall be used:

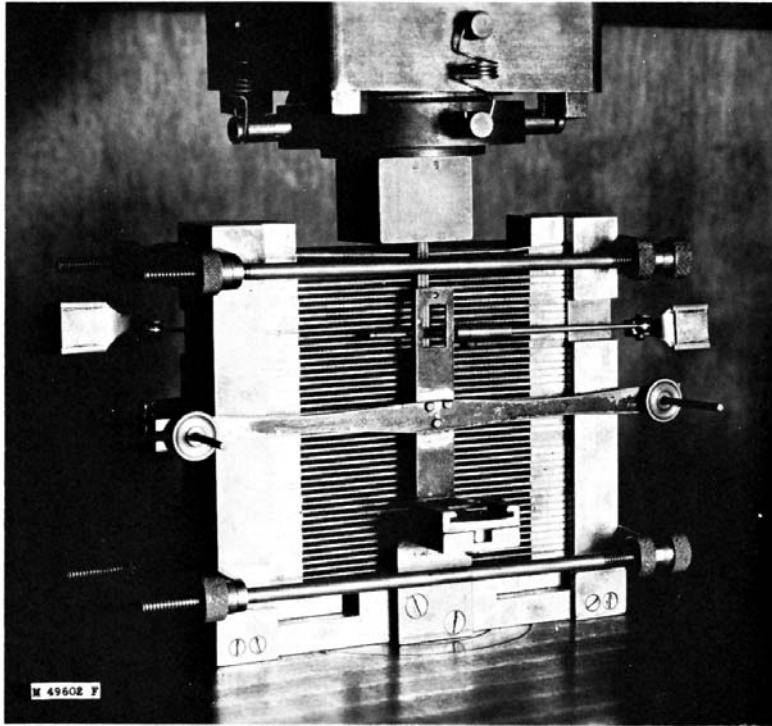


FIG. 1 Compression Test of Thin Structural Panel Supported Laterally Showing Marten's Mirror Compressometer for Measuring Deformations on Two Opposite Faces

12.2.1 A ratio of 20 or less, if data are to be recorded up to the proportional limit only, and

12.2.2 A ratio of 10 or less, if strength data only are required.

12.3 In order to obtain the specified length-to-thickness ratios, it is necessary, in some cases, to glue two or more specimens face to back.

### 13. Loading Procedure

13.1 Apply the load through a hinged connection on the upper head of the testing machine to allow for any deviations from parallel of the ends of the specimens, and permit adjustment to the end of the specimen in one direction. Specimen buckling can be restrained by use of optional hardware shown in Fig. 4. If restraint is used, hold the specimen loosely by the side restraining rail. Apply the load continuously throughout the test at a rate of movable head motion that will produce failure within 3 to 10 min after initiation of loading. A head speed rate of 0.035 in./min (0.9 mm/min)  $\pm 25\%$  is suggested. This gives a strain rate of approximately 0.002 in./in.-min (0.002 mm/mm-min). Typical loading hardware is shown in Fig. 5 and Fig. 4.

### 14. Load-Deformation Curves

14.1 Take data for load-deformation curves to determine modulus of elasticity and the proportional limit. Choose increments of load so that not less than 12 readings of load and deformation are taken to the proportional limit. Take deformation readings to the nearest 0.0001 in. (0.002 mm). Take deformation over the central portion of both sides of the

specimen with a gage length of 5 in. (127 mm). Use the average of the two readings in calculation of the modulus of elasticity. A suitable arrangement is shown in Fig. 4 with deformation measured by transducers mounted on opposite sides of the specimen. Record the load and deflection electrically and display continuous data on a suitable device.

### 15. Calculation of Results

#### 15.1 Calculate Results:

15.1.1 Compressive modulus of elasticity shall be calculated as follows:

$$E_c = (P/d) \cdot (L)/A \quad (1)$$

(See Note 1)

where:

$E_c$  = Compressive modulus of elasticity (psi)

$P/d$  = slope of the linear portion of load-deformation curve (lb/in.) (see Note 2)

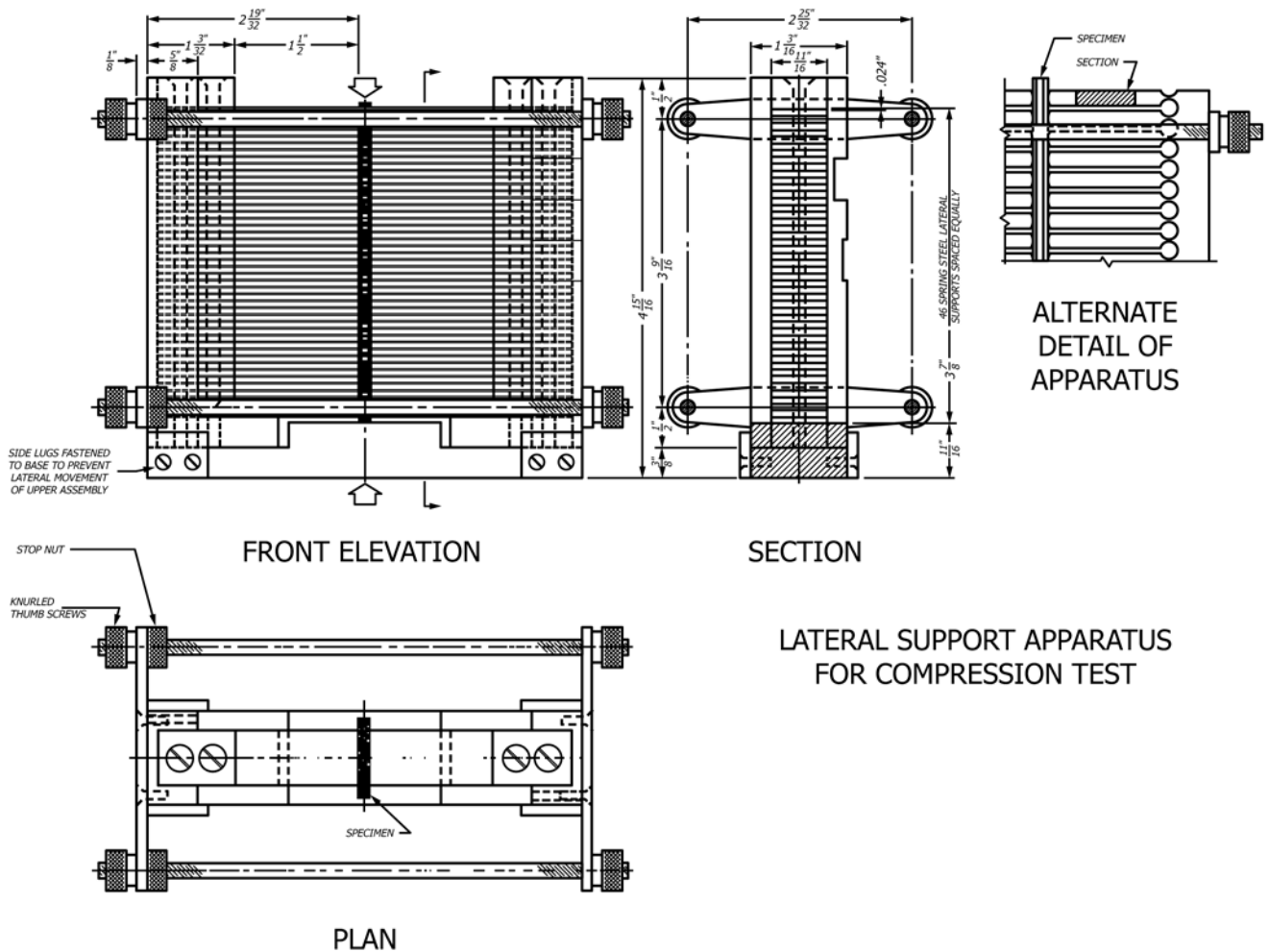
$L$  = deformation gage length (in.)

$A$  = cross-sectional area (in.<sup>2</sup>)

NOTE 1—Reporting compressive stiffness on a capacity basis (such as  $EA_c$  (lb) or  $EA_c$ /width (lb/ft)) is an acceptable alternative.

NOTE 2—Normal techniques to determine the slope of the load-deformation curve, such as measuring the maximum slope below the proportional limit, are often difficult to apply to compressive stiffness tests due to absence of a readily identifiable linear portion or proportional limit, or both. One suitable technique to determine the slope is to determine the best linear fit in the range of 5 to 35 % of the ultimate load. In any case, data covering a range of at least 20 % of the ultimate load and including loads up to and including applicable design stress should be used.

15.1.2 Compressive strength shall be calculated as follows:



LATERAL SUPPORT APPARATUS FOR COMPRESSION TEST

U.S. Customary Units, in.	Metric Equivalents, mm	U.S. Customary Units, in.	Metric Equivalents, mm
0.024	0.61	1 3/16	30
1/8	3	1 1/2	38
3/8	10	2 19/32	66
1/2	13	2 25/32	71
5/8	16	3 9/16	90
1 1/16	17	3 7/8	98
1 3/32	18	4 15/16	125

FIG. 2 Apparatus for Lateral Support for Compression Test

$$F_c = P_{max}/A \quad (2)$$

## REPORT

(See Note 3)

where:

$F_c$  = Compressive strength (psi)

$P_{max}$  = maximum load (lb)

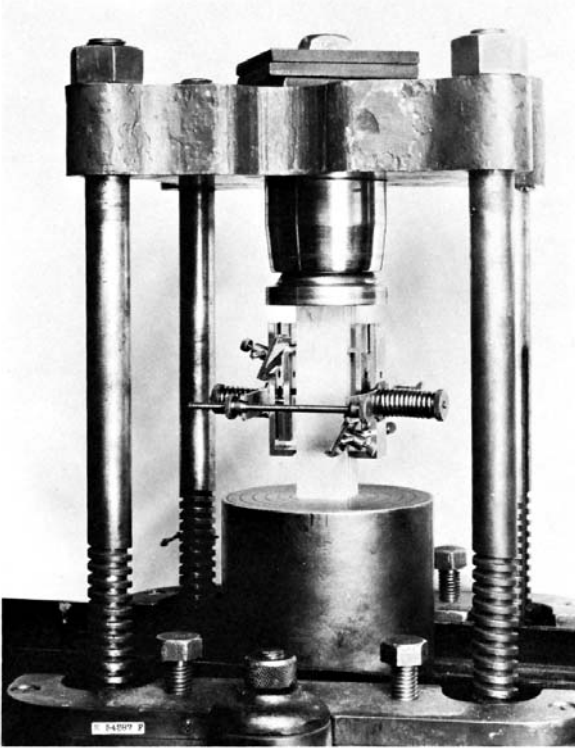
$A$  = cross-sectional area (in.<sup>2</sup>)

NOTE 3—Reporting compressive stress on a capacity basis (such as  $F_c A$  or  $F_c A/\text{width}$ ) are acceptable.

## 16. Report

16.1 The structural panel specimen, shall be described as to species, construction, and adhesive type used in its manufacture, and the principal direction with respect to load direction, and





**FIG. 3 Compression Test of Plywood Prism Showing Roller Compressometer Attachment (2-in. Gage Length) Affording Average Deformation for Two Opposite Faces**

16.3 Data for individual specimens and specimen averages where applicable shall include the following:

- 16.3.1 Thickness of panel,
- 16.3.2 Construction and veneer thicknesses (plywood panels),
- 16.3.3 Veneer or furnish species,
- 16.3.4 Moisture content,
- 16.3.5 Specific gravity,
- 16.3.6 Elapsed time to failure,
- 16.3.7 Load-deflection curve or ultimate load,
- 16.3.8 Description of failure,
- 16.3.9 Compressive stiffness and compressive strength, and
- 16.3.10 Elastic modulus and ultimate compressive strength.

### 17. Precision and Bias

17.1 The bias of these test methods have not yet been determined due to lack of an applicable standard reference material.

17.2 The precision of these test methods has not yet been determined.

17.3 Based on an interlaboratory study of compressive stiffness of plywood and OSB using Method B, the reproducibility standard deviation was found to vary between 173 000 lb/ft and 1 870 000 lb/ft for panels with compressive stiffness ranging between 3 940 000 lb/ft and 7 950 000 lb/ft.

### 18. Keywords

- 18.1 compression; structural panels; wood

16.2 Description of compressive test method used, including whether optional restraining device is used (for Method B), and deformation gauge.

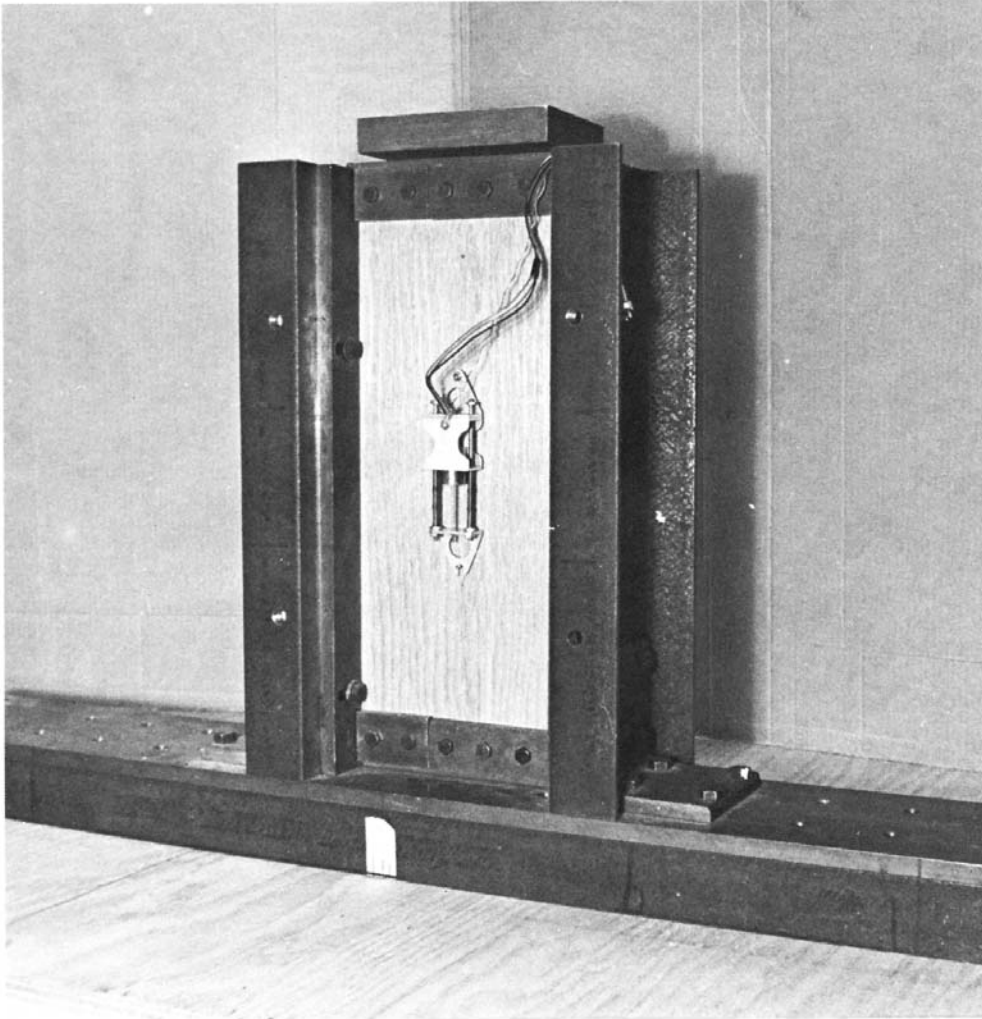
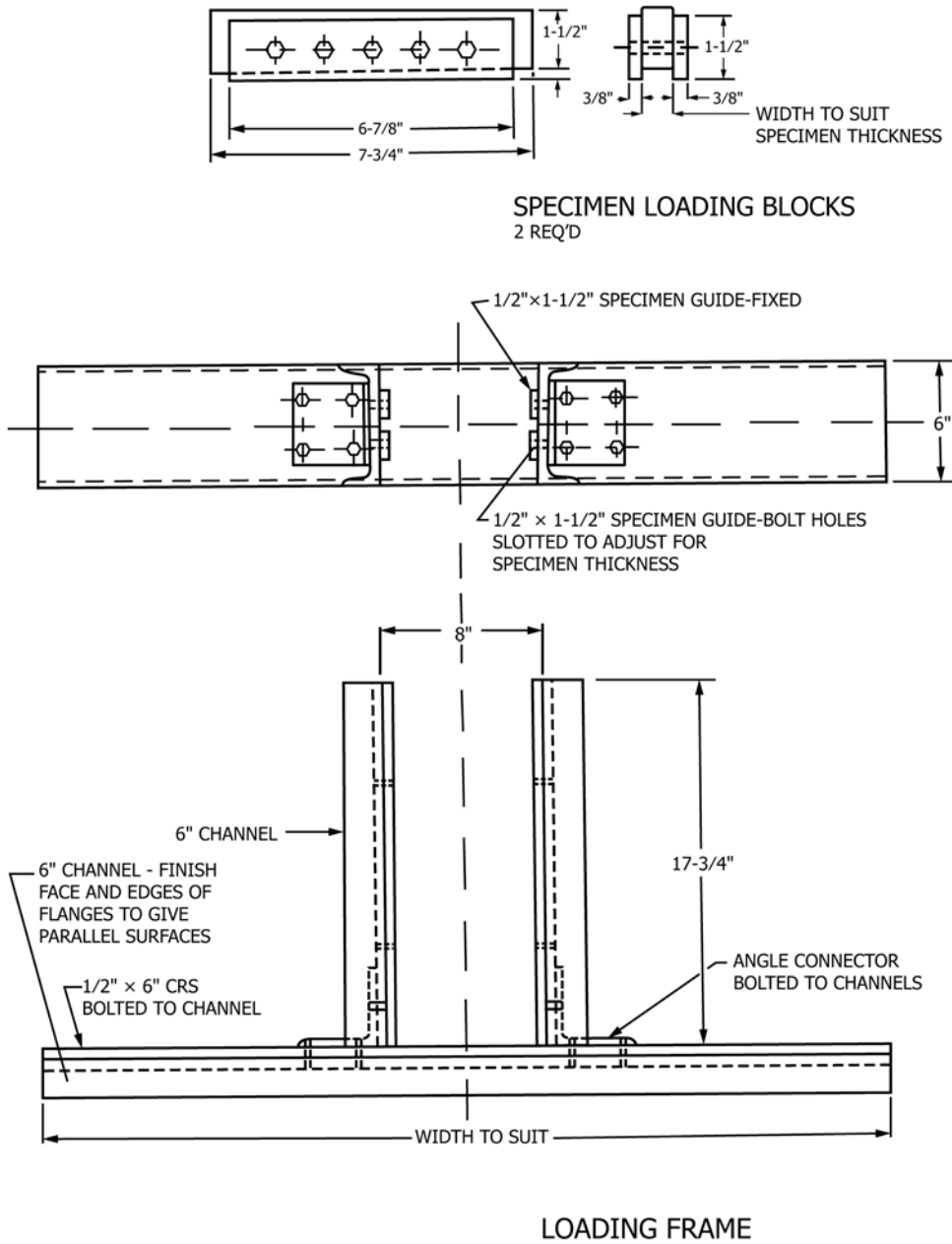


FIG. 4 Method B, Loading Hardware Showing a Specimen Mounted with Transducers for Deformation Measurement



**FIG. 5 Method B, Loading Hardware**

ASTM International takes no position respecting the validity of any patent rights asserted in connection with any item mentioned in this standard. Users of this standard are expressly advised that determination of the validity of any such patent rights, and the risk of infringement of such rights, are entirely their own responsibility.

This standard is subject to revision at any time by the responsible technical committee and must be reviewed every five years and if not revised, either reapproved or withdrawn. Your comments are invited either for revision of this standard or for additional standards and should be addressed to ASTM International Headquarters. Your comments will receive careful consideration at a meeting of the responsible technical committee, which you may attend. If you feel that your comments have not received a fair hearing you should make your views known to the ASTM Committee on Standards, at the address shown below.

This standard is copyrighted by ASTM International, 100 Barr Harbor Drive, PO Box C700, West Conshohocken, PA 19428-2959, United States. Individual reprints (single or multiple copies) of this standard may be obtained by contacting ASTM at the above address or at 610-832-9585 (phone), 610-832-9555 (fax), or service@astm.org (e-mail); or through the ASTM website (www.astm.org). Permission rights to photocopy the standard may also be secured from the Copyright Clearance Center, 222 Rosewood Drive, Danvers, MA 01923, Tel: (978) 646-2600; http://www.copyright.com/