



# Standard Test Method for Carbon Monoxide in the Atmosphere (Continuous Measurement by Nondispersive Infrared Spectrometry)<sup>1</sup>

This standard is issued under the fixed designation D3162; the number immediately following the designation indicates the year of original adoption or, in the case of revision, the year of last revision. A number in parentheses indicates the year of last reapproval. A superscript epsilon ( $\epsilon$ ) indicates an editorial change since the last revision or reapproval.

*This standard has been approved for use by agencies of the U.S. Department of Defense.*

## 1. Scope

1.1 This test method is applicable to the determination of the carbon monoxide (CO) concentration of the atmosphere between 0.6 mg/m<sup>3</sup> (0.5 ppm(v)) and 115 mg/m<sup>3</sup> (100 ppm(v)). The measuring principle is based on the absorption of infrared radiation by CO in the 4.7  $\mu$ m region (1).<sup>2</sup>

1.2 The test method has a limit of detection of about 0.6 mg/m<sup>3</sup> (0.5 ppm(v)) carbon monoxide in air.

1.3 *This standard does not purport to address all of the safety concerns, if any, associated with its use. It is the responsibility of the user of this standard to establish appropriate safety and health practices and determine the applicability of regulatory limitations prior to use.* See Section 9 for additional precautions.

## 2. Referenced Documents

2.1 *ASTM Standards:*<sup>3</sup>

[D1356 Terminology Relating to Sampling and Analysis of Atmospheres](#)

[D1357 Practice for Planning the Sampling of the Ambient Atmosphere](#)

[D1914 Practice for Conversion Units and Factors Relating to Sampling and Analysis of Atmospheres](#)

[D3249 Practice for General Ambient Air Analyzer Procedures](#)

[D3631 Test Methods for Measuring Surface Atmospheric Pressure](#)

[E1 Specification for ASTM Liquid-in-Glass Thermometers](#)

[E180 Practice for Determining the Precision of ASTM](#)

<sup>1</sup> This test method is under the jurisdiction of ASTM Committee D22 on Air Quality and is the direct responsibility of Subcommittee D22.03 on Ambient Atmospheres and Source Emissions.

Current edition approved April 1, 2012. Published May 2012. Originally approved in 1973. Last previous edition approved in 2005 as D3162 – 94 (2005). DOI: 10.1520/D3162-94R05.

<sup>2</sup> The boldface numbers in parentheses refer to the list of references at the end of the standard.

<sup>3</sup> For referenced ASTM standards, visit the ASTM website, [www.astm.org](http://www.astm.org), or contact ASTM Customer Service at [service@astm.org](mailto:service@astm.org). For *Annual Book of ASTM Standards* volume information, refer to the standard's Document Summary page on the ASTM website.

[Methods for Analysis and Testing of Industrial and Specialty Chemicals \(Withdrawn 2009\)](#)<sup>4</sup>

## 3. Terminology

3.1 *Definitions:*

3.1.1 For definitions of terms used in this test method, refer to Terminology [D1356](#) and Practice [D3249](#).

3.2 *Definitions of Terms Specific to This Standard:*

3.2.1 *fall time*—the time interval between initial response and 90 % of final response after a step decrease in input concentrations.

## 4. Summary of Test Method

4.1 An atmospheric sample is introduced into a sample conditioning system and then into a nondispersive infrared spectrometer (NDIR). The spectrometer measures the absorption by CO at 4.7  $\mu$ m using two parallel infrared beams through a sample and a reference cell and a selective detector. The detector signal is conducted to an amplifier control section, and the analyzer output measured on a meter and recording system (2).

4.1.1 Some instruments use gas filter correlation to compare the IR absorption spectrum between the measured gas and other gases present in the gas being sampled, in a single sample cell. These instruments utilize a concentrated sample of CO as a filter for the IR transmitted through the sample cell to produce a beam that cannot be further attenuated by the CO in the sample, and thus produces the reference beam. The broadband radiation that passes through the sample cell and the CO filter is filtered again by a narrow-band-pass filter that allows only the CO-sensitive portion of the band to pass to the detector. The removal of wavelengths sensitive to other gases reduces interferences.

4.2 The concentration of CO in the sample is determined from a calibration curve prepared using standard calibration gases.

<sup>4</sup> The last approved version of this historical standard is referenced on [www.astm.org](http://www.astm.org).

## 5. Significance and Use

5.1 Determination of carbon monoxide is essential to evaluation of many air pollution complexes. This test method derives significance from providing such determination.

5.2 Carbon monoxide is formed in the process of incomplete combustion of hydrocarbon fuels, and is a constituent of the exhaust of gasoline engines. The Environmental Protection Agency (EPA) has set primary and secondary air quality standards for CO that are designed to protect the public health and welfare (3, 4).

5.3 This test method is suitable for measurements appropriate for the purposes noted in 5.1 and 5.2.

## 6. Interferences

6.1 Degree of interference varies among individual instruments. Consult manufacturer's specifications for the particular analyzer to determine whether interferences render the instrument unsuitable for the proposed use.

6.2 The primary interferent is water vapor. With no correction, the error may be as high as 11 mg CO/m<sup>3</sup> map edit n (10 ppm(v)) (5).

6.2.1 Water vapor interference can be minimized by using one of the following steps:

6.2.1.1 Passing the air sample through silica gel or similar drying agent.

6.2.1.2 Maintaining constant humidity in the sample and calibration gases by refrigeration.

6.2.1.3 Saturating the air sample and calibration gases to maintain constant humidity.

6.2.1.4 Using narrow-band optical filters in combination with some of the above measures.

6.2.1.5 Where sample is dried or humidified a volume correction may be necessary.

6.2.1.6 Gas correlation spectrometers minimize interferences and use a narrow-band-pass filter to ensure measuring only the CO-sensitive IR wavelengths.

6.3 Interference may be caused by carbon dioxide (CO<sub>2</sub>). The effect of CO<sub>2</sub> interference at concentrations normally present in ambient air is minimal; that is, 1350 mg (750 ppm(v)) CO<sub>2</sub>/m<sup>3</sup> may give a response equivalent to 0.6 mg CO/m<sup>3</sup> (0.5 ppm(v)) (5).

6.4 Hydrocarbons at concentrations normally found in the ambient air do not ordinarily interfere; that is, 325 mg methane/m<sup>3</sup> (500 ppm(v)) may give a response equivalent to 0.6 mg CO/m<sup>3</sup> (0.5 ppm(v)) (5).

## 7. Apparatus

7.1 *NDIR Carbon Monoxide in Air Analyzer*, complete with voltage transformer, analyzer section, amplifier/control section, meter, and recording system. Analyzer must meet or exceed performance specifications described in Annex A1.

7.2 *Sample Conditioning System*, consisting of pump, flow control valve, pressure relief valve, flowmeter, filter, and moisture control.

7.3 A typical sampling and analyzer system is described in Fig. 1.

7.4 *Thermometer*—Temperature measuring devices such as RTDs (Resistance Temperature Devices), thermistors and organic liquid-in-glass thermometers meeting the requirements of specific applications may be used.

7.5 *Barograph or Barometer*, capable of measuring atmospheric pressure to ±0.6 kPa (5 torr). See Test Method D3631.

## 8. Reagents and Materials

8.1 *Zero Gas*—A pressurized cylinder of pure nitrogen containing less than 0.1 mg/m<sup>3</sup> CO (0.09 ppm(v)) and having a regulated flow supply.

8.2 *Up-Scale Span Gas*—A pressurized cylinder containing a span gas mixture consisting of CO in air corresponding to 80 % of full scale. A regulated flow system must be provided.

8.3 *Calibration Gases*—Pressured cylinders with regulated flow control are required. These should contain concentrations of CO in air corresponding to the instrument operating range. In order to establish a calibration curve, nitrogen with CO in amounts of 10, 20, 40, and 80 % of full scale are needed.

8.4 *Calibration Certificate*—The span and calibration gases should be certified to be between ±2 % of the stated value, and be supplied in high-pressure cylinders with inside surfaces of a chromium-molybdenum alloy of low iron content. Replacement cylinder should be verified by procedures in Annex A3.

## 9. Precautions

9.1 Operate analyzer system in nonexplosive areas unless equipment is explosion-proof.

9.2 The handling and storage of compressed gas cylinders, and the installation and use of the analyzer shall follow Practice D3249. Cylinders shall not be exposed to direct sunlight.

9.3 Maintain the same sample cell pressure during sampling and calibration. Use the same sample pump.

## 10. Sampling

10.1 *General*—For planning sampling programs, refer to Practices D1357 and D3249.

10.2 When sampling the outside ambient atmosphere from an enclosure, a sampling line or probe shall be utilized. It shall extend at least 1 m [3 ft] from the enclosure, and shall be protected against the entry of precipitation.

10.3 Since the analyzer may be temperature-sensitive, it shall be placed in an enclosure with atmosphere control so the temperature remains constant within ±3°C [±5°F].

10.4 Record the temperature and pressure of the atmosphere sample.

## 11. Calibration and Standardization

11.1 For calibration procedures, refer to Annex A2.

11.2 *Frequency of Calibration*:

11.2.1 *Multipoint Calibration*—A multipoint calibration is required when:

11.2.1.1 The analyzer is first purchased.

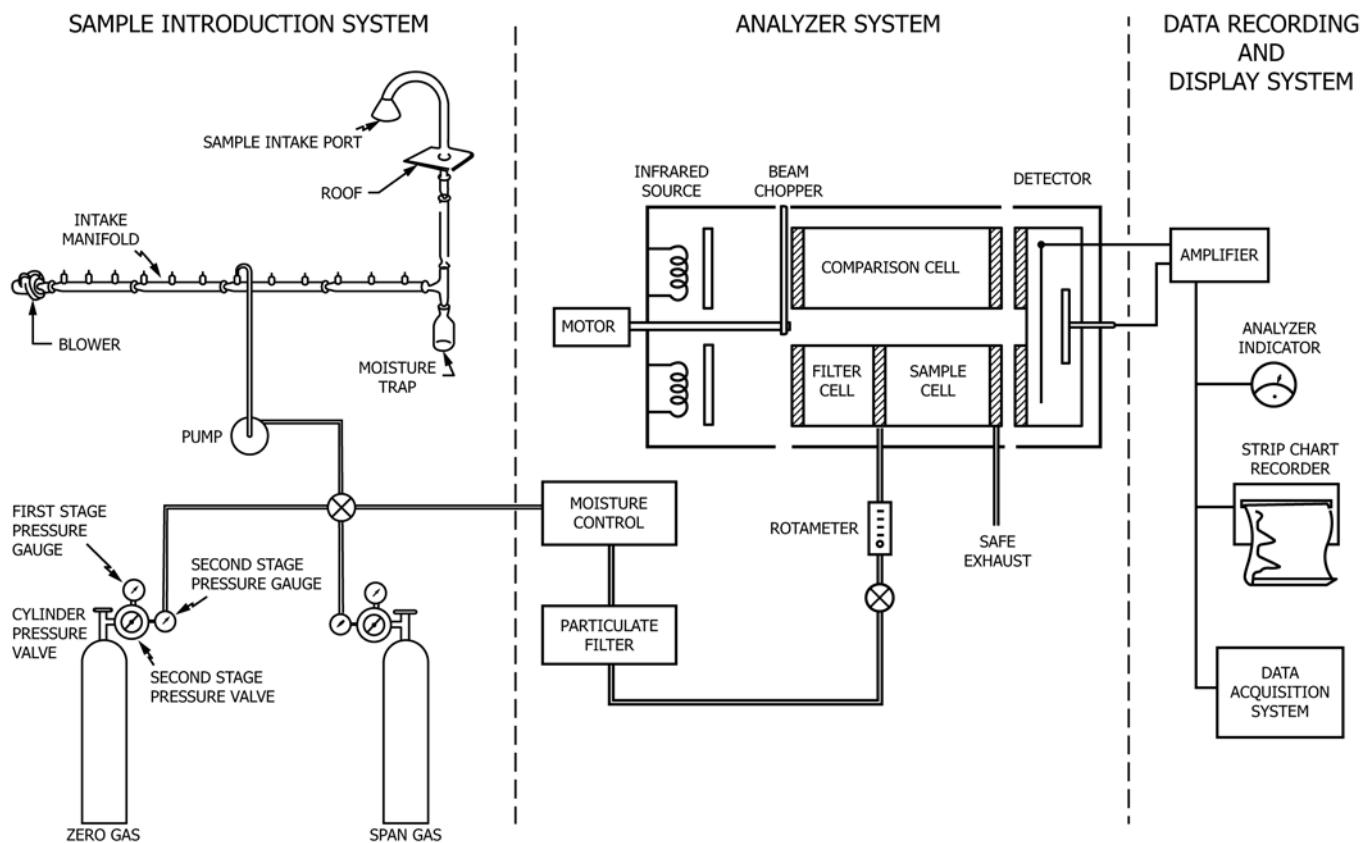


FIG. 1 Carbon Monoxide Monitoring System Flow Chart

11.2.1.2 The analyzer has had maintenance that could affect its response characteristics.

11.2.1.3 When the analyzer shows drift in excess of specifications as determined when the zero and span calibration is performed (see 11.2.2).

11.2.2 *Zero and Span Calibration*—A zero and span calibration is required before and after each sampling period, or, if the analyzer is used continuously, daily.

11.3 *Sample Cell Pressure Gauge*—The sample cell pressure gauge shall be calibrated in accordance with Annex A2, as follows:

11.3.1 When the analyzer is purchased.

11.3.2 At 6-month intervals.

11.3.3 When the gauge shows a change larger than 6.9 kPa [1 psi] during a sampling period in which the flow rate did not change more than  $\pm 0.014 \text{ m}^3/\text{h}$  [ $0.5 \text{ ft}^3/\text{h}$ ].

**12. Procedure**

12.1 After proper calibration has been established, check all analyzer system operating parameters and set the sample flow rate.

12.2 When the analyzer output has stabilized, take the recorder readout and determine the concentration of CO directly from the calibration curve in ppm(v).

12.3 Perform the operational checks described in Annex A4 daily, or during each sampling period (6).

**13. Calculation**

13.1 To convert ppm(v) to  $\text{mg}/\text{m}^3$ , refer to Practice D1914.

**14. Precision and Bias**

NOTE 1—The precision statements are based on an interlaboratory study conducted by Southwest Research Institute, Houston, Tex., in 1972 on three samples of carbon monoxide in dry air. Three master cylinders of gas containing nominal concentrations of 8, 30, and 53  $\text{mg}/\text{m}^3$  were prepared and subsamples in high-pressure cylinders were submitted to the collaborating laboratories. Each subsample was analyzed in triplicate and the analyses replicated on 2 more days for a total of 810 determinations. The results from the 15 laboratories were evaluated by the procedure described in Practice E180.

14.1 *Precision (7)*:

14.1.1 *Triplicate Analysis*—Report the carbon monoxide (CO) content to 0.1  $\text{mg}/\text{m}^3$ . Triplicate runs (Note 2) with a range of 0.6  $\text{mg}/\text{m}^3$  are acceptable for averaging (95 % confidence level).<sup>5</sup>

NOTE 2—Duplicate runs that agree within 0.5  $\text{mg}/\text{m}^3$  are acceptable for averaging (95 % confidence level).

14.1.2 *Repeatability (Single Analyst)*—The standard deviation of the mean (each the average of triplicate determinations) obtained by the same analyst on different days has been estimated to 0.44  $\text{mg}/\text{m}^3$  at 140 df. Two such values should be

<sup>5</sup> Supporting data have been filed at ASTM International Headquarters and may be obtained by requesting Research Report RR:D22-1000. Contact ASTM Customer Service at service@astm.org.

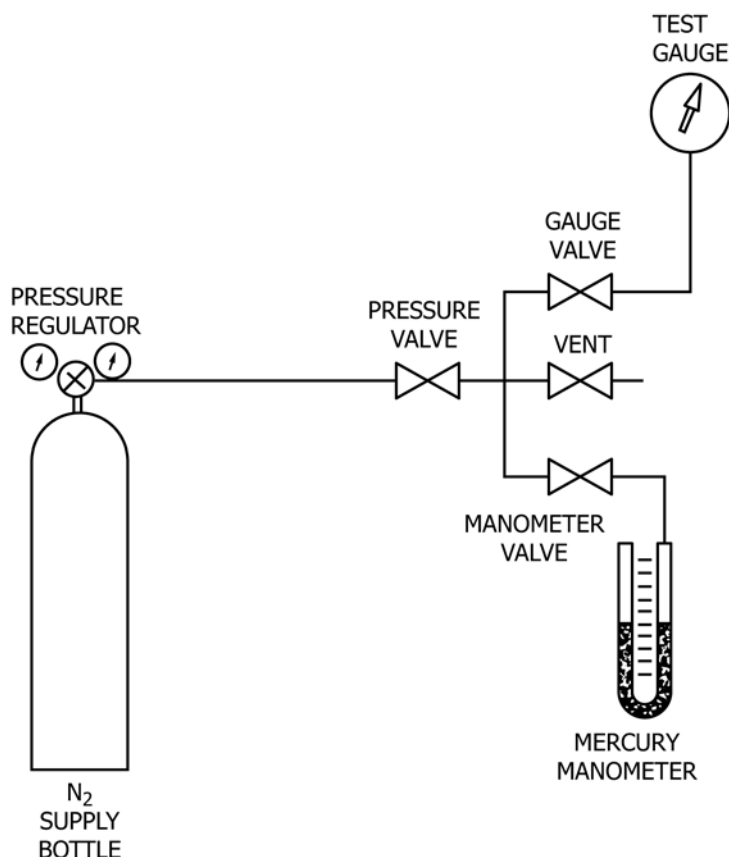


FIG. 2 Calibration Set-up for Pressure Gauges

considered suspect (95 % confidence level) if they differ by more than 1.2 mg/m<sup>3</sup> (see Note 2).

14.1.3 *Reproducibility (Multilaboratories)*—The standard deviation of the mean (each the average of triplicate determinations) obtained by analysts in different laboratories has been estimated to be 0.96 mg/m<sup>3</sup> at 11 df. Two such values should be considered suspect (95 % confidence level) if they vary by more than 3.0 mg/m<sup>3</sup> (see Note 2).

14.2 *Bias*—Since this infrared measurement produces relative values, the bias of the method is dependent on the bias of the calibrations of the gases used in preparing the calibration curve.

## 15. Keywords

15.1 ambient atmospheres; analysis; carbon monoxide; non-dispersive infrared spectroscopy; sampling

## ANNEXES

### (Mandatory Information)

#### A1. MINIMUM PERFORMANCE SPECIFICATIONS FOR NONDISPERSIVE INFRARED CARBON MONOXIDE ANALYZER

A1.1 *Range*—(minimum)—0 to 115 mg/m<sup>3</sup> (0 to 100 ppm(v))

A1.2 *Limit of Detection*—0.6 mg/m<sup>3</sup> (0.5 ppm(v))

A1.3 *Rise Time*—(90 %) 5 min (maximum)

A1.4 *Fall Time*—(90 %) 5 min (maximum)

A1.5 *Zero Drift*—(±1 %/day and ±2 %/3 days) (maximum)

A1.6 *Span Drift*—(±1 %/day and ±2 %/3 days) (maximum)

A1.7 *Precision*—(±4 %) (maximum)

A1.8 *Operation Period*—(minimum) 3 days

A1.9 *Noise Level*—±0.5 % of full scale

A1.10 *Operating Temperature Range*—5 to 40°C

## A2. CALIBRATION PROCEDURES

### A2.1 Analyzer Multipoint Calibration

A2.1.1 *Cylinder Pressure Check*—Check the cylinder pressure of each calibration gas. If a cylinder pressure is less than 2.1 MPa [300 psi], discard the cylinder.

#### A2.1.2 *Calibration Procedure:*

A2.1.2.1 Turn the analyzer power on, and allow it to sample ambient air for 24 to 48 h to stabilize (or in accordance with manufacturers' instructions).

A2.1.2.2 Connect the zero gas cylinder to the analyzer.

A2.1.2.3 Set pressure of second stage of pressure regulator about 34 kPa (5 psi) above desired sample cell pressure. (**Warning**—Do not exceed pressure limit of sample cell.)

A2.1.2.4 Set the sample flow rate to the value to be used during sampling.

A2.1.2.5 Let the zero gas flow until the recorder trace is stabilized or for 5 min, whichever is greater.

A2.1.2.6 Adjust the zero control knob so the trace corresponds to a line representing 5 % of scale.

A2.1.2.7 Repeat **A2.1.2.5**.

A2.1.2.8 Disconnect the zero gas.

A2.1.2.9 Connect the span gas to the analyzer.

A2.1.2.10 Repeat **A2.1.2.3 – A2.1.2.5**.

A2.1.2.11 Adjust the span control knob until the recorder reads the correct reading, calculated as follows:

$$\left(\frac{C_s}{C_f} \times 100\right) + 5 = S_c \quad (\text{A2.1})$$

where:

$C_s$  = concentration of span gas, ppm(v),

$C_f$  = full-scale reading, ppm(v),

$S_c$  = corrected span reading,

100 = factor to express concentration in percent of range, and

5 = 5 % scale offset.

A2.1.2.12 Let the span gas flow until the trace is stabilized, or for 5 min, whichever is greater.

A2.1.2.13 Disconnect the span gas.

A2.1.2.14 Repeat **A2.1.2.2 – A2.1.2.8**. If no adjustment is requested, proceed to **A2.1.2.15**. If adjustment of greater than 1 ppm(v) is required, repeat **A2.1.2.9 – A2.1.2.13**.

A2.1.2.15 Lock the zero and span knob controls.

A2.1.2.16 Connect the 10 % span gas cylinder to the analyzer.

A2.1.2.17 Repeat **A2.1.2.3 – A2.1.2.5**. Do not make any adjustments.

A2.1.2.18 Disconnect the cylinder.

A2.1.2.19 Repeat **A2.1.2.16 – A2.1.2.18** for the 20 and 40 % span gas cylinders.

A2.1.2.20 Prepare a calibration curve of deflection versus percent concentration in ppm(v). Draw a best-fit smooth curve

passing through the zero and span points and minimizing the deviation of the intermediate points from the curve. The curve should be either a straight line or bowed in one direction only.

A2.1.2.21 Recheck any calibration point deviating more than  $\pm(1.0 + 0.02 C_c)$  from the smooth curve, where  $C_c$  is the certified concentration of the calibration gas. If the recheck gives the same result, reanalyze the calibration gas.

### A2.2 Zero and Span Calibration Procedures

A2.2.1 Perform procedure in **A2.1**.

A2.2.2 Perform **A2.1.2.9** through **A2.1.2.10**, using the 80 % span gas. Mark the reading as “unadjusted span.” Do not make any adjustments to zero or span.

A2.2.3 Disconnect the span gas cylinder.

A2.2.4 Connect the zero gas cylinder to the analyzer.

A2.2.5 Perform **A2.1.2.3 – A2.1.2.5**. Mark the reading as “unadjusted zero.”

A2.2.6 Adjust the zero control knob until the trace corresponds to the true zero setting. Let the zero gas flow until a stable trace is obtained, or for 5 min, whichever is greater. Match the trace as “adjusted zero.”

A2.2.7 Disconnect the zero gas cylinder.

A2.2.8 Connect the span gas cylinder to the analyzer.

A2.2.9 Perform **A2.1.2.10 – A2.1.2.15**.

### A2.3 Pressure Gauge Calibrations

A2.3.1 *Apparatus*—Mercury manometer cylinder of zero gas, two stage regulator set up as in **Fig. 2**, and calibrated wall barometer.

#### A2.3.2 *Procedure:*

A2.3.2.1 Open the cylinder pressure valve.

A2.3.2.2 Adjust the second stage of the regulator until the second-stage pressure gauge reads 138 kPa [20 psi].

A2.3.2.3 Open the manometer valve slowly, and allow it to stabilize.

A2.3.2.4 Open the test gauge valve slowly, and allow it to stabilize.

A2.3.2.5 Read the pressure indicated by the manometer.

A2.3.2.6 Determine the ambient atmospheric pressure from the wall barometer.

A2.3.2.7 Compute the pressure at the test gauge in accordance with Test Method **D3631**.

A2.3.2.8 Record  $P_t$  and the actual reading of the gauge.

A2.3.2.9 Repeat **A2.3.2.2 – A2.3.2.8**, for 172 kPa [25 psi] and then 207 kPa [30 psi].

A2.3.2.10 Prepare a calibration curve.



### A3. PROCEDURE FOR VALIDATION OF REPLACEMENT SPAN GAS CYLINDER

A3.1 Set up the analyzer, and prepare a calibration curve using old span gases, in accordance with A2.1.

A3.2 Connect the replacement gas cylinder to the analyzer.

A3.3 Perform A2.1.2.3 – A2.1.2.5.

A3.4 If the replacement cylinder has a measured value between  $\pm (1.0 + 0.02 C_c)$  ppm(v), where  $C_c$  is the certified value, accept the cylinder. If the value does not agree, have the cylinder recertified.

### A4. OPERATIONAL CHECKS

A4.1 *Zero and Span Knob Setting*—If the required zero and span correction performed in accordance with A2.2 are greater than  $\pm 1.0$  ppm(v), have the analyzer serviced.

A4.2 *Sample Flow Rate*—If the sample flow rate has changed greater than  $\pm 20\%$  from the initial value, check the particulate filter for plugging, and the sample pump for faulty operation. Check the filter monthly by measuring the flow with and without the filter in use. Replace the filter if the indicated flow differential is greater than 5%. Clean or replace the rotameter when it acts sporadically.

A4.3 *Sample Cell Pressure*—If the sample cell pressure increased more than  $\pm 10\%$  of the initial value, have the analyzer serviced.

A4.4 *Temperature Control*—Check the temperature of the shelter or room in which the analyzer is located. If it has changed greater than  $\pm 3^\circ\text{C}$  [ $\pm 5^\circ\text{F}$ ], have the heating-cooling system serviced.

A4.5 *Water Vapor*—Perform the check specified in the analyzer's instruction manual.

A4.6 *Analog Recording System*—Check the strip chart recorder for the following:

A4.6.1 Chart speed setting.

A4.6.2 Gain control setting.

A4.6.3 Ink supply.

A4.6.4 Paper supply.

A4.6.5 Sign of excess noise.

A4.6.6 Proper operation of analyzer.

A4.6.7 Time mark, sign, and date the record.

A4.7 *Digital Recorder*—Perform the check in accordance with the manufacturer's instructions.

### REFERENCES

- (1) Dechant, R. F., and Mueller, P. K., "Performance of Continuous NDIR Carbon Monoxide Analyzer," Report No. 57, *Air and Industrial Hygiene Laboratory*, AIHL, Department of Public Health, Berkeley, CA, June 1969.
- (2) Jacobs, M. B., Braverman, M. M. and Hochheiser, S., "Continuous Determination of Carbon Monoxide and Hydrocarbons in Air by a Modified Infrared Spectrometer, *J. Air Pollution Control Association*, Vol 9, 1959, pp. 110–114.
- (3) 40 CFR, Part 50, Nov. 25, 1971.
- (4) 40 CFR, Part 50, Feb. 18, 1975.
- (5) Moore, M., "A Critical Evaluation of the Analysis of Carbon Monoxide with Nondispersive Infrared, NDIR," Presented at the Ninth Conference on Methods in Air Pollution and Industrial Hygiene Studies, Pasadena, CA, Feb. 7–9, 1968.
- (6) Smith, F., and Nelson, A. C., "Guideline for Development of a Quality Assurance Program. Reference Method for Continuous Measurement of CO in the Atmosphere." Environmental Protection Agency Document, EPA-R4-73-028a. Research Triangle Institute. Research Triangle Park, NC, 1973.
- (7) McKee, H. C., and Childers, R. E., "Collaborative Study of Reference Method for the Continuous Measurement of Carbon Monoxide in the Atmosphere (Nondispersive Infrared Spectrometry)," Southwest Research Institute, Contract CPA 70–40, SWRI Report 01-2811, San Antonio, TX, May 1972.

*ASTM International takes no position respecting the validity of any patent rights asserted in connection with any item mentioned in this standard. Users of this standard are expressly advised that determination of the validity of any such patent rights, and the risk of infringement of such rights, are entirely their own responsibility.*

*This standard is subject to revision at any time by the responsible technical committee and must be reviewed every five years and if not revised, either reapproved or withdrawn. Your comments are invited either for revision of this standard or for additional standards and should be addressed to ASTM International Headquarters. Your comments will receive careful consideration at a meeting of the responsible technical committee, which you may attend. If you feel that your comments have not received a fair hearing you should make your views known to the ASTM Committee on Standards, at the address shown below.*

*This standard is copyrighted by ASTM International, 100 Barr Harbor Drive, PO Box C700, West Conshohocken, PA 19428-2959, United States. Individual reprints (single or multiple copies) of this standard may be obtained by contacting ASTM at the above address or at 610-832-9585 (phone), 610-832-9555 (fax), or [service@astm.org](mailto:service@astm.org) (e-mail); or through the ASTM website ([www.astm.org](http://www.astm.org)). Permission rights to photocopy the standard may also be secured from the Copyright Clearance Center, 222 Rosewood Drive, Danvers, MA 01923, Tel: (978) 646-2600; <http://www.copyright.com/>*