



# Standard Test Method for Brittleness Temperature of Plastic Sheeting by Impact<sup>1</sup>

This standard is issued under the fixed designation D1790; the number immediately following the designation indicates the year of original adoption or, in the case of revision, the year of last revision. A number in parentheses indicates the year of last reappraisal. A superscript epsilon ( $\epsilon$ ) indicates an editorial change since the last revision or reappraisal.

*This standard has been approved for use by agencies of the U.S. Department of Defense.*

## 1. Scope\*

1.1 This test method covers the determination of that temperature at which plastic sheeting 1.00 mm (0.040 in.) or less in thickness exhibits a brittle failure under specified impact conditions.

1.2 The values stated in SI units are to be regarded as the standard. The values given in parentheses are for information only.

NOTE 1—This test method was developed jointly with the Society of the Plastics Industry, primarily for use with plasticized vinyl sheetings. Its applicability to other plastic sheetings must be verified by the user.

1.3 *This standard does not purport to address the safety concerns, if any, associated with its use. It is the responsibility of the user of this standard to establish appropriate safety and health practices and determine the applicability of regulatory limitations prior to use.*

NOTE 2—This test method and ISO 8570 address the same subject matter, but differ in technical content.

## 2. Referenced Documents

### 2.1 ASTM Standards:<sup>2</sup>

- D618 Practice for Conditioning Plastics for Testing
- D883 Terminology Relating to Plastics
- D5947 Test Methods for Physical Dimensions of Solid Plastics Specimens
- D6988 Guide for Determination of Thickness of Plastic Film Test Specimens
- E691 Practice for Conducting an Interlaboratory Study to Determine the Precision of a Test Method

<sup>1</sup> This test method is under the jurisdiction of ASTM Committee D20 on Plastics and is the direct responsibility of Subcommittee D20.30 on Thermal Properties.

Current edition approved Oct. 1, 2014. Published October 2014. Originally approved in 1960. Last previous edition approved in 2008 as D1790 - 08. DOI: 10.1520/D1790-14.

<sup>2</sup> For referenced ASTM standards, visit the ASTM website, www.astm.org, or contact ASTM Customer Service at service@astm.org. For *Annual Book of ASTM Standards* volume information, refer to the standard's Document Summary page on the ASTM website.

### 2.2 ISO Standard:

ISO 8570 Plastics—Film and Sheeting—Determination of Cold-Crack Temperature<sup>3</sup>

## 3. Terminology

### 3.1 Definitions:

3.1.1 *brittleness temperature,  $T_b$* —that temperature, derived statistically, where 80 % of the specimens would probably pass 95 % of the time when a stated minimum number are tested by this test method. The 80 %-passing value is determined by plotting the data on probability graph paper, as described in 9.1.

3.1.2 *General*—Definitions of terms applying to this test method appear in Terminology D883.

## 4. Significance and Use

4.1 Data obtained by this test method have been used to predict the behavior of plastic sheeting at low temperatures only if the conditions of deformation are similar to those specified in this test method. This test method is useful for specification testing and for comparative purposes, but does not necessarily determine the lowest use temperature for a particular plastic.

4.2 It has been demonstrated that on calendered sheeting the brittleness temperature is sensitive to the direction of fold. It has also been demonstrated that the brittleness temperature is sensitive to the direction of sampling. Therefore, it is imperative that the procedure for taking specimens and folding be followed explicitly.

## 5. Apparatus

5.1 *Cold Conditioning Chamber*, at least 450 by 450 by 450 mm (18 by 18 by 18 in.). Means (automatic or manual) shall be provided for controlling the temperature of the chamber to within  $\pm 2^\circ\text{C}$  of the desired value.

<sup>3</sup> Available from American National Standards Institute (ANSI), 25 W. 43rd St., 4th Floor, New York, NY 10036, http://www.ansi.org.

\*A Summary of Changes section appears at the end of this standard

5.2 *Impact Tester* shown in Fig. 1 shall be constructed of cold-rolled steel except for the bolts, screws, and rubber stopper. It is recommended that all structural parts (that is, base, anvil, arm, arm supports, and shaft) be chromium plated to prevent corrosion. The arm, including the rubber stopper and bolt, shall weigh  $3.09 \text{ kg} \pm 28 \text{ g}$  ( $6 \text{ lb } 13 \pm 1 \text{ oz}$ ).

5.3 *Die*,  $50.8 \pm 0.4 \text{ mm}$  by  $146.1 \pm 0.4 \text{ mm}$  ( $2 \pm \frac{1}{64} \text{ in.}$  by  $5\frac{3}{4} \pm \frac{1}{64} \text{ in.}$ ) to cut the test specimens from the sample.

5.4 *Stapler*, desk-type, with a stop mounted on the base exactly  $12.7 \text{ mm}$  ( $\frac{1}{2} \text{ in.}$ ) back of the center of the groover that turns the staple.

5.5 *Index Card Stock*, 50 by 127 mm (2 by 5 in.).

5.6 *Thickness Gauge*—A dead-weight dial or digital micrometer as described in D5947 or D6988 as appropriate for the material or specimen geometry being tested.

## 6. Test Specimens

6.1 The test specimens shall be cut with the die. The length of the test specimen shall be parallel to the transverse direction of the sheeting.

6.2 The test specimens shall be selected so that the thickness is uniform to within 10% of the thickness over the length of the specimen in the case of specimens  $0.25 \text{ mm}$  ( $0.010 \text{ in.}$ ) or less in thickness and to within 5% in the case of specimens greater than  $0.25 \text{ mm}$  ( $0.010 \text{ in.}$ ) in thickness but do not exceed  $1.00 \text{ mm}$  ( $0.040 \text{ in.}$ ) in thickness.

6.3 The 50-mm (2-in.) ends of each specimen shall be so collected that a gradual, closed loop is formed at room temperatures. The collected ends of the specimen and one end of the 50 by 127-mm (2 by 5-in.) card shall be matched exactly with the body of the loop lying on the card. Two staples shall be crimped through the matched ends of the specimen and

card. These staples shall be  $13\text{-mm}$  ( $\frac{1}{2} \text{ in.}$ ) from, and parallel to, the  $50\text{-mm}$  (2-in.) end of the stack.

6.4 Since it has been demonstrated that this test is sensitive to the direction of fold on calendered sheeting, it is necessary to stipulate that all specimens be folded in the same direction. It is recommended that, for materials with no grain, the specimen be folded so that the surface last in contact with the roll shall be inside the loop following the inherent shape of the specimen; grained materials are to be tested with the grained surface on the inside of the loop.

## 7. Conditioning

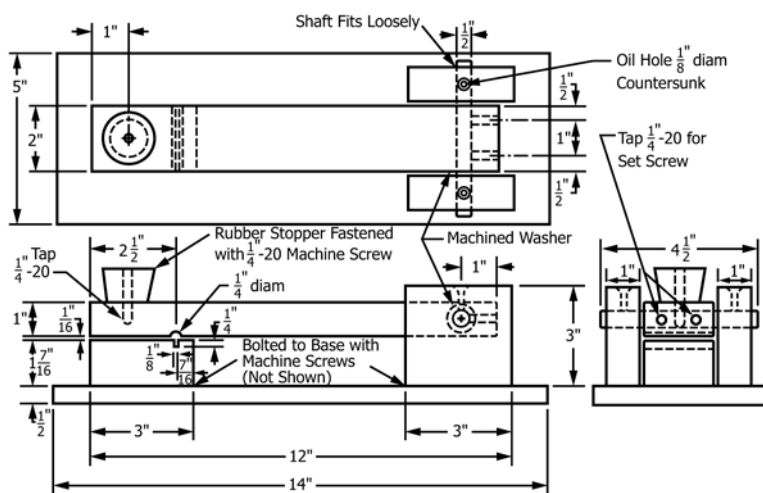
7.1 *Conditioning*—Condition the test specimens at  $23 \pm 2^\circ\text{C}$  ( $73.4 \pm 3.6^\circ\text{F}$ ) and  $50 \pm 10\%$  relative humidity for not less than 40 h prior to test in accordance with Procedure A of Practice D618, for those tests where conditioning is required. In cases of disagreement, the tolerances shall be  $\pm 1^\circ\text{C}$  ( $\pm 1.8^\circ\text{F}$ ) and  $\pm 5\%$  relative humidity.

7.2 *Test Conditions*—Conduct tests in the standard laboratory environment of  $23 \pm 2^\circ\text{C}$  ( $73.4 \pm 3.6^\circ\text{F}$ ) and  $50 \pm 10\%$  relative humidity, unless otherwise specified in the test methods or in this test method. In cases of disagreements, the tolerances shall be  $\pm 1^\circ\text{C}$  ( $\pm 1.8^\circ\text{F}$ ) and  $\pm 5\%$  relative humidity.

## 8. Procedure

8.1 Measure the thickness of the specimen at several points along its length to an accuracy of  $0.0025 \text{ mm}$  ( $0.0001 \text{ in.}$ ) or better for specimens  $0.25 \text{ mm}$  ( $0.010 \text{ in.}$ ) or less in thickness and to an accuracy of 1% or better for specimens greater than  $0.25 \text{ mm}$  ( $0.010 \text{ in.}$ ) in thickness but do not exceed  $1.00 \text{ mm}$  ( $0.040 \text{ in.}$ ) in thickness.

NOTE 3—Refer to D6988 for specimens  $0.25 \text{ mm}$  ( $0.010 \text{ in.}$ ) or less in thickness.



Metric Equivalents

in.	1/8	1/4	7/16	1/2	1	2 1/2	3	4 1/2	12	14
mm	3.2	6.4	11.1	12.7	25.4	64	76	114	305	356

FIG. 1 Brittleness Temperature Impact Testing Machine

NOTE 4—Refer to **D5947** for specimens greater than 0.25 mm (0.010 in.) in thickness.

8.2 Place the impact tester, with its base horizontal, in the cold conditioning chamber at the desired testing temperature, for a conditioning period of 1 h. Expose the specimens to the test temperature for  $15 \pm 5$  min.

8.3 Place each of ten mounted test specimens individually on the anvil with the crimped ends of the staples on the back of the card fitted into the groove in the anvil. Handle the card, not the sample. Locate the bent loop of the sheeting on the anvil with the loop centered on the anvil and facing away from the pivotal end of the impact arm.

8.4 Allow the impact arm to fall free from a position within  $5^\circ$  perpendicular to the base onto the bent loop. Repeat until each of the ten conditioned specimens has been tested.

8.5 Remove the specimens and examine for failure. Partial fracture shall be construed as failure as well as complete division into two or more pieces.

8.6 Adjust the temperature of the cold conditioning chamber in order to have a minimum of four results, two above and two below the 50 % point. Condition the groups of ten specimens for  $15 \pm 5$  min at the selected temperatures, as indicated by the results of testing. Repeat the testing procedure and examination.

8.7 When testing for conformance to a specification, it shall be satisfactory to accept materials on the basis of testing a minimum of ten test specimens at the specified temperature. Not more than 20 % of the specified number of test specimens shall fail at the specified temperature.

## 9. Calculation

9.1 Plot the data on probability graph paper with the temperature on the linear scale and the percentage failure on the probability scale. Select the temperature scale so that it represents a minimum of two divisions per degree Celsius. Draw a straight line through a minimum of four points, two above and two below the 50 % point. The temperature indicated at the intersection of the data line with the 20 % failure line shall be reported as  $T_b$ , the 80 % passing temperature (20 % failure temperature).

## 10. Report

10.1 Report the following information:

10.1.1 Complete identification of the material tested, including type, source, manufacturer’s code designation, form, and previous history,

10.1.2 Eighty percent passing temperature, to the nearest degree Celsius,

10.1.3 Thickness of test specimen,

10.1.4 Direction of fold,

10.1.5 Conditioning procedure, and

10.1.6 Date of test.

10.2 For routine acceptance testing, report the following instead of **10.1.1**, and **10.1.2**:

10.2.1 Number of specimens tested,

10.2.2 Temperature of test, and

10.2.3 Number of failures.

## 11. Precision and Bias

11.1 **Table 1** is based on a round robin conducted in 1991 in accordance with Practice **E691**, involving three materials tested by seven laboratories. For each material, all of the samples were prepared at one source, but the individual specimens were prepared at the laboratories that tested them. The test result for each material was based on a minimum of four trials, performed under varying conditions, involving ten specimens in each trial. Each laboratory obtained two test results for each material. (**Warning**—The following explanations of  $r$  and  $R$  (**11.2** through **11.2.3**) are only intended to present a meaningful way of considering the approximate precision of this method. It is not appropriate to apply the data in **Table 1** rigorously to acceptance or rejection of material, as those data are specific to the round robin and are unlikely to be representative of other lots, conditions, materials, or laboratories. It is recommended that users of this test method should apply the principles outlined in Practice **E691** to generate data specific to their laboratory and materials, or between specific laboratories. The principles of **11.2** through **11.2.3** would then be valid for such data.)

NOTE 5—Material Number 3 (SP-61737 Lot 30) was tested successfully by only three of the seven participating labs due to equipment limitations.

11.2 *Concept of  $r$  and  $R$* —If  $S_r$  and  $S_R$  have been calculated from a large enough body of data, and for test results that were averages from testing 40 specimens (four trials involving ten specimens in each trial):

11.2.1 *Repeatability Limit,  $r$* —(Comparing two test results for the same material, obtained by the same operator using the same equipment on the same day.) The two test results shall be judged not equivalent if they differ by more than the “ $r$ ” value for that material.

11.2.2 *Reproducibility Limit,  $R$* —(Comparing two test results for the same material, obtained by two different operators using different equipment in different laboratories.) The two test results shall be judged not equivalent if they differ by more than the “ $R$ ” value for that material.

**TABLE 1 Statistical Assessment of Brittleness Temperature Round-Robin Results**

Number	Material	Description	Values Expressed in °C				
			Average	$S_r^A$	$S_R^B$	$r^C$	$R^D$
1	HN-81414	Lot 3 Squirrel Grey 0.013 in. (0.33 mm)	-16.2	0.62	2.36	1.74	6.61
2	HC-41310	Lot 2 Special Tan 0.014 in. (0.36 mm)	-18.3	0.80	2.88	2.24	8.10
3	SP-61737	Lot 30 Blue 0.020 in. (0.51 mm)	-39.2	0.73	3.71	2.04	10.4

<sup>A</sup>  $S_r$  = within-laboratory standard deviation.

<sup>B</sup>  $S_R$  = between-laboratory standard deviation.

<sup>C</sup>  $r$  = within-laboratory repeatability limit =  $2.8^*S_r$ .

<sup>D</sup>  $R$  = between-laboratory reproducibility limit =  $2.8^*S_R$ .

11.2.3 Any judgment in accordance with 11.2.1 or 11.2.2 would have an approximate 95 % probability of being correct.

11.3 There are no recognized standards by which to estimate the bias of this test method.

## 12. Keywords

12.1 brittleness temperature; cold-crack temperature; impact; plastic sheeting

## SUMMARY OF CHANGES

Committee D20 has identified the location of selected changes to this standard since the last issue (D1790 - 08) that may impact the use of this standard. (October 1, 2014)

(1) Changed relative humidity requirement to  $\pm 10\%$  from  $\pm 5\%$  in 7.1 and 7.2.

(2) Changed 8.6 to reflect using probability graph paper

(3) Removed old 8.7: Reference to standard graph method.

(4) Renumbered 8.8 to 8.7

(5) Removed “Graphic Method” title from 9.1.

*ASTM International takes no position respecting the validity of any patent rights asserted in connection with any item mentioned in this standard. Users of this standard are expressly advised that determination of the validity of any such patent rights, and the risk of infringement of such rights, are entirely their own responsibility.*

*This standard is subject to revision at any time by the responsible technical committee and must be reviewed every five years and if not revised, either reapproved or withdrawn. Your comments are invited either for revision of this standard or for additional standards and should be addressed to ASTM International Headquarters. Your comments will receive careful consideration at a meeting of the responsible technical committee, which you may attend. If you feel that your comments have not received a fair hearing you should make your views known to the ASTM Committee on Standards, at the address shown below.*

*This standard is copyrighted by ASTM International, 100 Barr Harbor Drive, PO Box C700, West Conshohocken, PA 19428-2959, United States. Individual reprints (single or multiple copies) of this standard may be obtained by contacting ASTM at the above address or at 610-832-9585 (phone), 610-832-9555 (fax), or service@astm.org (e-mail); or through the ASTM website (www.astm.org). Permission rights to photocopy the standard may also be secured from the Copyright Clearance Center, 222 Rosewood Drive, Danvers, MA 01923, Tel: (978) 646-2600; <http://www.copyright.com/>*