



# Standard Test Method for Leakage Tendencies of Automotive Wheel Bearing Greases<sup>1</sup>

This standard is issued under the fixed designation D 1263; the number immediately following the designation indicates the year of original adoption or, in the case of revision, the year of last revision. A number in parentheses indicates the year of last approval. A superscript epsilon ( $\epsilon$ ) indicates an editorial change since the last revision or reapproval.

*This standard has been approved for use by agencies of the Department of Defense.*

<sup>e1</sup> NOTE—Warning notes were editorially moved into text in May 2005.

## 1. Scope

1.1 This test method covers the evaluation of the leakage tendencies of wheel bearing greases when tested under prescribed laboratory conditions.

1.2 The values stated in SI units are to be regarded as the standard. The values given in parentheses are for information only.

1.3 *This standard does not purport to address all of the safety concerns, if any, associated with its use. It is the responsibility of the user of this standard to establish appropriate safety and health practices and determine the applicability of regulatory limitations prior to use.* For specific hazard information see 8 and Annex A2.

## 2. Referenced Documents

2.1 *ASTM Standards:*<sup>2</sup>

D 217 Test Methods for Cone Penetration of Lubricating Grease

D 3527 Test Method for Life Performance of Automotive Wheel Bearing Grease

D 4175 Terminology Relating to Petroleum, Petroleum Products, and Lubricants

D 4290 Test Method for Determining the Leakage Tendencies of Automotive Wheel Bearing Grease under Accelerated Conditions

E 1 Specification for ASTM Liquid-In-Glass Thermometers

E 77 Test Method for Inspection and Verification of Thermometers

## 3. Terminology

3.1 *Definitions:*

<sup>1</sup> This test method is under the jurisdiction of ASTM Committee D02 on Petroleum Products and Lubricants and is the direct responsibility of Subcommittee D02.G0 on Lubricating Grease.

Current edition approved May 1, 2005. Published May 2005. Originally approved in 1953. Last previous edition approved in 1999 as D 1263 – 94 (1999).

<sup>2</sup> For referenced ASTM standards, visit the ASTM website, www.astm.org, or contact ASTM Customer Service at service@astm.org. For *Annual Book of ASTM Standards* volume information, refer to the standard's Document Summary page on the ASTM website.

3.1.1 *lubricating grease, n*—a semi-fluid to solid product of a dispersion of a thickener in a liquid lubricant.

3.1.1.1 *Discussion*—The dispersion of the thickener forms a two-phase system and immobilizes the liquid lubricant by surface tension and other physical forces. Other ingredients are commonly included to impart special properties. **D 217**

3.1.2 *lubricant, n*—any material interposed between two surfaces that reduces the friction or wear between them. **D 4175**

3.1.3 *thickener, n—in lubricating grease*, a substance composed of finely-divided particles dispersed in a liquid lubricant to form the product's structure.

3.1.3.1 *Discussion*—The solid thickener can be fibers (such as various metallic soaps) or plates or spheres (such as certain non-soap thickeners) which are insoluble or, at the most, only very slightly soluble in the liquid lubricant. The general requirements are that the solid particles be extremely small, uniformly dispersed, and capable of forming a relatively stable, gel-like structure with the liquid lubricant. **D 217**

3.2 *Definitions of Terms Specific to This Standard:*

3.2.1 *automotive wheel bearing grease, n*—a lubricating grease specifically formulated to lubricate automotive wheel bearings at relatively high grease temperatures and bearing speed. **D 3527**

3.2.2 *leakage, n—of wheel bearing grease*, separation and overflow of grease or oil from the bulk grease charge, induced by high temperature and bearing rotation. **D 4290**

## 4. Summary of Test Method

4.1 The grease is distributed in a modified front-wheel hub and spindle assembly. The hub is rotated at a speed of  $660 \pm 30$  rpm for  $6 \text{ h} \pm 5 \text{ min}$ , at a spindle temperature which is raised to and then maintained at  $105 \pm 1.2^\circ\text{C}$  ( $220 \pm 2.5^\circ\text{F}$ ). Leakage of grease or oil, or both, is measured, and the condition of the bearing surface is noted at the end of the test.

## 5. Significance and Use

5.1 The test method provides a screening device that permits differentiation among products having distinctly different leakage characteristics (**Note 1**). It is not the equivalent of

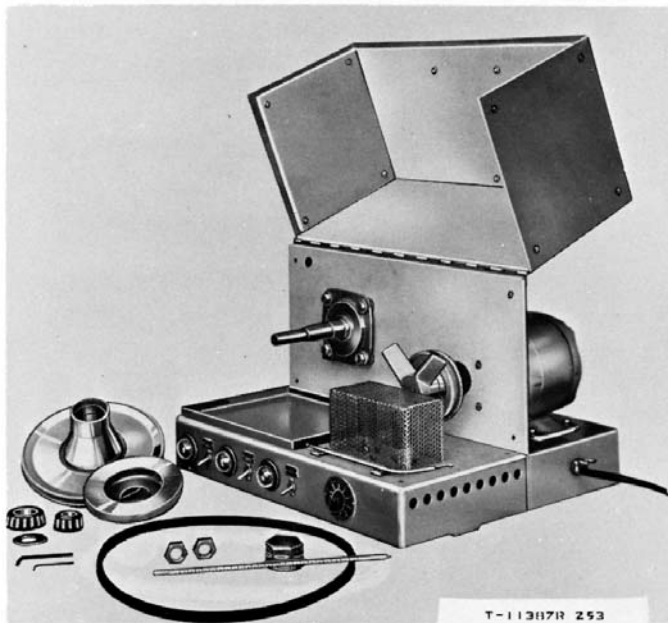


FIG. 1 Apparatus for Testing Leakage Tendencies of Wheel Bearing Greases

longtime service tests, nor is it intended to distinguish between wheel bearing greases showing similar or borderline leakage.

NOTE 1—It is possible for skilled operators to observe significant changes in other important grease characteristics that occurred during the test. Such additional information can be of special interest to individual operators. The observations, however, are subject to differences in personal judgment among operators, and cannot be used effectively for quantitative rating.

## 6. Apparatus

6.1 The apparatus shown in Fig. 1 and Fig. 2 has been found suitable and is described in detail in Annex A1. The tester consists of a special front wheel hub and spindle assembly, the hub being rotated by an electric motor through a V-belt drive. The assembly is encased in a thermostatically controlled air bath. Means of measuring both ambient (cabinet) and spindle temperatures are provided. A torque wrench, suitable for use on 31.75-mm (1¼-in.) hexagonal nuts, is also required.<sup>3</sup>

6.2 The apparatus (spindle, case, and motor) must be electrically grounded, otherwise the thermocouples will not function due to accumulated static charges. Provision is made for this, as shown in Fig. 2.

6.3 Machines furnished with 660-W heaters have been found suitable, and these will usually provide the proper heat input to attain the temperatures in the specified time intervals. However, if it is found that proper balance cannot be obtained, heaters of the required wattage can be substituted.

<sup>3</sup> Wrenches meeting these requirements are available from a number of companies. One example is listed in the catalog of the Snap-On Tools Corp., 8028 28th Ave., Kenosha, WI, as No. TQ 12A. A suitable adapter and socket are required to match this type wrench and nut. If you are aware of alternative suppliers, please provide this information to ASTM International Headquarters. Your comments will receive careful consideration at a meeting of the responsible technical committee<sup>1</sup>, which you may attend.

## 7. Test Bearings

7.1 The inner bearing (tapered roller) is Timken 15118. The corresponding cup is No. 15250. The smaller, outer bearing, is Timken 09074, with corresponding cup No. 09196.

## 8. Reagent

8.1 ASTM *n*-Heptane—99.87 % purity SRM 1815. (Warning—Flammable. Harmful if inhaled.)

## 9. Procedure

9.1 Weigh  $90 \pm 1$  g of sample on a flat plate. Using a spatula, pack  $2 \pm 0.1$  g of grease in the small bearing and  $3 \pm 0.1$  g in the large bearing (Note 2). Distribute the balance of the test grease (85 g) in a uniform layer on the inside of the hub (Note 3). Apply a thin film of grease to the bearing races in the hub.

NOTE 2—A narrow, wedge-cut spatula has been found of considerable aid in packing the bearings.

NOTE 3—The balance of the test grease will fill the hub practically even with the races, and, with the exception of very fibrous greases, can be distributed readily and uniformly by use of a spatula having a 150-mm (6-in.) blade.

9.2 Weigh separately the leakage collector and the hub cap to the nearest 0.1 g. Place the leakage collector and the large (inner) bearing in the proper position on the spindle. Put the hub and small (outer) bearing on the spindle, followed by the loose-fitting retainer ring. With the torque wrench, tighten the hexagonal nut which holds the hub assembly in place, applying a torque of  $6.8 \pm 0.1$  N·m ( $60 \pm 2$  lbf·in.). Then back off the hexagonal nut  $60 \pm 5^\circ$  (or one flat), and lock it in position with a second hexagonal nut. Screw on the hub cap, put the V-belt on the pulleys, and close the cabinet. (Caution: All grease collectors should be inspected carefully to make sure that the inner lip is flush with the sealing face. Otherwise, this lip will interfere with the correct seating of the inner bearing. In assembling the packed hub on the spindle, care should be taken to prevent contact between grease pack and spindle. From time to time, the drive pulley and the driven pulley should be checked for alignment. Misalignment can introduce leakage variations.)

NOTE 4—Excessive end play of the hub assembly is sometimes due to worn bearings. Therefore new bearings, both cups and cones, should be installed after each 250 tests, or sooner if inspection indicates wear or other damage to the bearings.

9.3 After closing the cabinet turn on the motor and both heaters. Operate at a speed of  $660 \pm 30$  rpm for  $6 \text{ h} \pm 5 \text{ min}$ , the spindle temperature being raised to  $105 \pm 1.4^\circ\text{C}$  ( $220 \pm 2.5^\circ\text{F}$ ) then maintained for the balance of the test period. The spindle temperature of  $105 \pm 1.4^\circ\text{C}$  is obtained by maintaining an ambient temperature of  $115 \pm 3^\circ\text{C}$  ( $235 \pm 5^\circ\text{F}$ ). Leave the auxiliary heater on only until an ambient or oven temperature of  $115^\circ\text{C}$  is attained. It is desirable to have the thermoregulator previously adjusted to maintain a  $115^\circ\text{C}$  oven temperature, or to have a reproducible setting for this temperature. The ambient temperature of  $115 \pm 3^\circ\text{C}$  shall be attained within  $15 \pm 5 \text{ min}$ . The spindle temperature of  $105 \pm 1.4^\circ\text{C}$  shall be attained within  $60 \pm 10 \text{ min}$ . This combination results in the spindle holding  $105 \pm 1.4^\circ\text{C}$  for  $5 \text{ h} \pm 15 \text{ min}$ . (Caution:

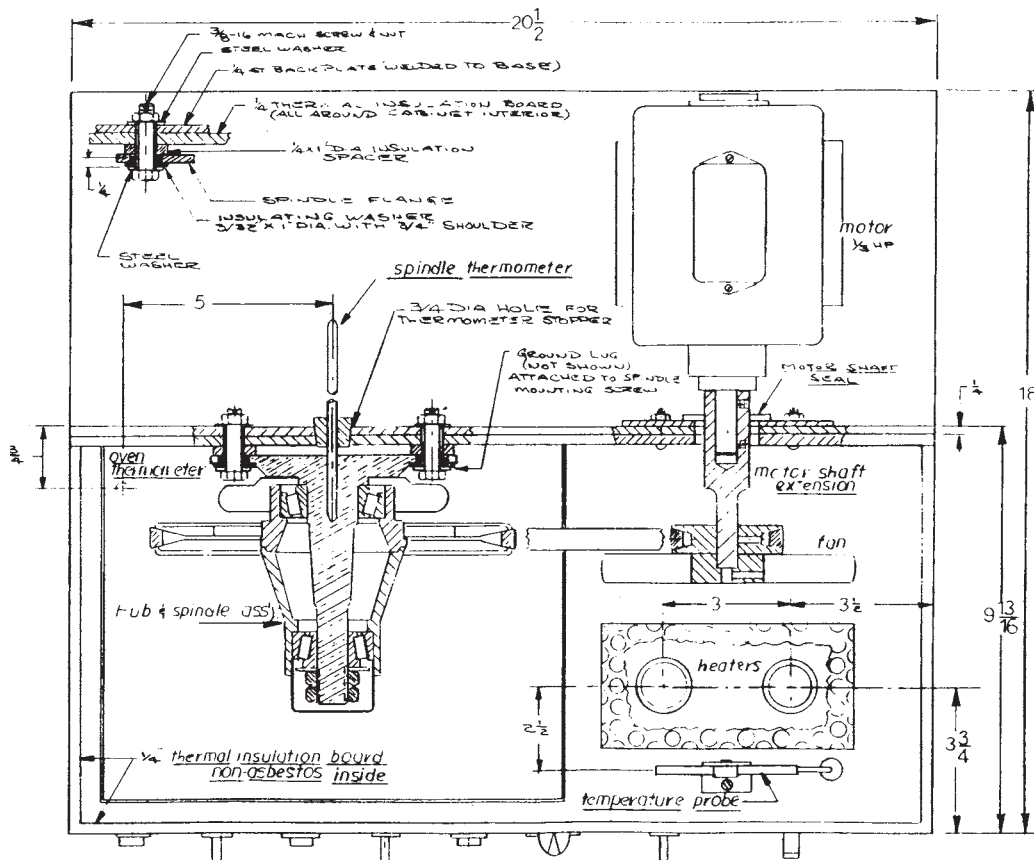


FIG. 2 Details of Main Assembly

Drafts can affect the rate of heating. Care should therefore be exercised in the location of the tester.)

9.4 At the end of the 6-h test period, that is, 6 h from the time the motor and heaters are turned on, shut off the power and dismantle the apparatus while hot. Wear appropriate protective clothing to permit the handling of hot equipment.

9.5 After the apparatus has cooled, weigh separately the leakage collector and the hub cap to the nearest 0.1 g.

NOTE 5—If the leakage collector overflows, the overflow grease or oil, or both, should be weighed and included in the total leakage reported.

9.6 Wash the two bearings in ASTM *n*-heptane (**Warning**—see 8.1) for at least 2 min at room temperature to remove the grease (see Note 6). Inspect for varnish, gum, or lacquer-like deposits.

NOTE 6—With some wheel bearing greases, it will be found that the soaps are not completely washed from the bearings with *n*-heptane. A film of soap may, therefore, remain on the bearings. This film can be readily distinguished from varnish, gum, or lacquer-like deposits resulting from deterioration of the lubricant.

## 10. Report

10.1 Report the total amount of leakage of grease or oil, or both, into the collector and into the hub cap.

10.2 Report the presence on the bearing surface of any adherent deposit of varnish, gum, or lacquer-like material, which is evident after removal of the grease (Note 6).

## 11. Precision and Bias<sup>4</sup>

11.1 The precision of this test is not known to have been obtained in accordance with currently accepted guidelines (for example, in Committee D02 Research Report RR:D2-1007.)

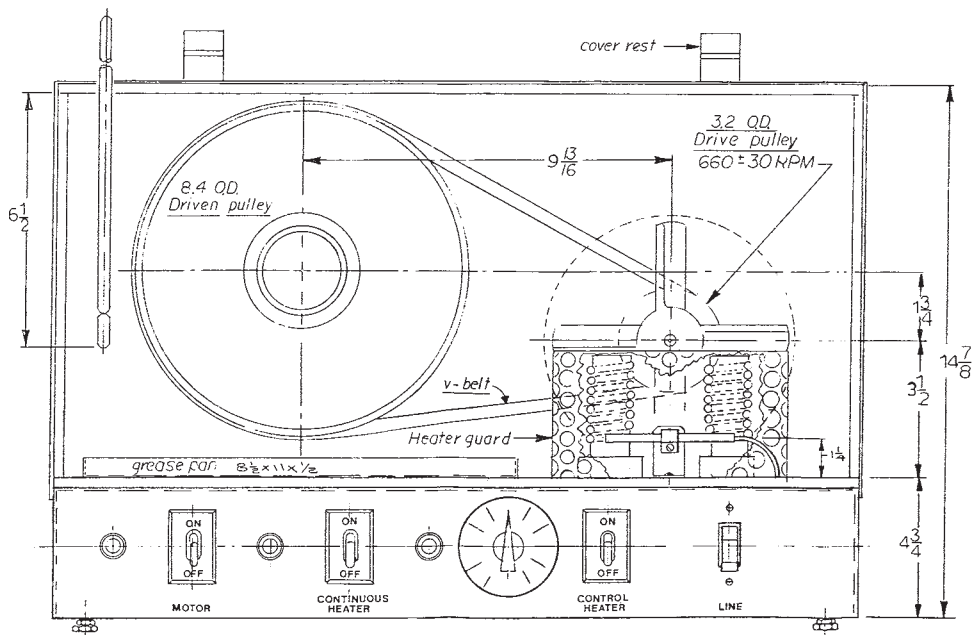
11.2 The precision of the test method as determined by statistical examination of interlaboratory results is as follows:

11.2.1 *Repeatability*—The difference between two test results, obtained by the same operator with the same apparatus under constant operating conditions on identical test material, would in the long run, in the normal and correct operation of the test method, exceed the following values only in one case in twenty:

Leakage in Area of	Acceptable Difference
2 g	1.5 g
15 to 20 g	9 g

11.2.2 *Reproducibility*—The difference between two single and independent results obtained by different operators working in different laboratories on identical test material would, in the long run, in the normal and correct operation of the test method, exceed the following values only in one case in twenty:

<sup>4</sup> There is no Research Report on file because this method was developed before Research Report guidelines were instituted and data are no longer available.



**Metric Equivalents**

in.	mm	in.	mm	in.	mm
20 1/2	521	5	127	1	25.4
19 5/16	491	4 7/8	124	3/4	19.1
13 1/2	337	3 1/2	88.9	1/2	12.7
11	279	3 3/8	85.7	3/8	9.5
9 3/4	248	3 1/4	82.6	5/16	7.9
9 1/2	241	3.2	81.3	1/4	6.4
9 3/8	238	3	76	3/16	4.8
8 1/2	216	2	51	3/32	2.4
8.4	213	1 3/4	44.5	0.074	1.88
8	203	1 5/8	41.3	16 threads/in. spacing 0.63 mm 1/4 hp = 187 W	
6 1/2	165	1 1/2	38.1		

**FIG. 2 Details of Main Assembly (continued)**

Leakage in Area of	Acceptable Difference
2 g	4 g
15 to 20 g	9 g

11.3 *Bias*—The procedure in Test Method D 1263 for measuring leakage tendencies of automotive wheel bearing greases has no bias because the value of leakage can be defined only in terms of a test method.

**12. Keywords**

12.1 automotive wheel bearing; leakage; lubricating grease; wheel bearing grease

**ANNEXES**

**(Mandatory Information)**

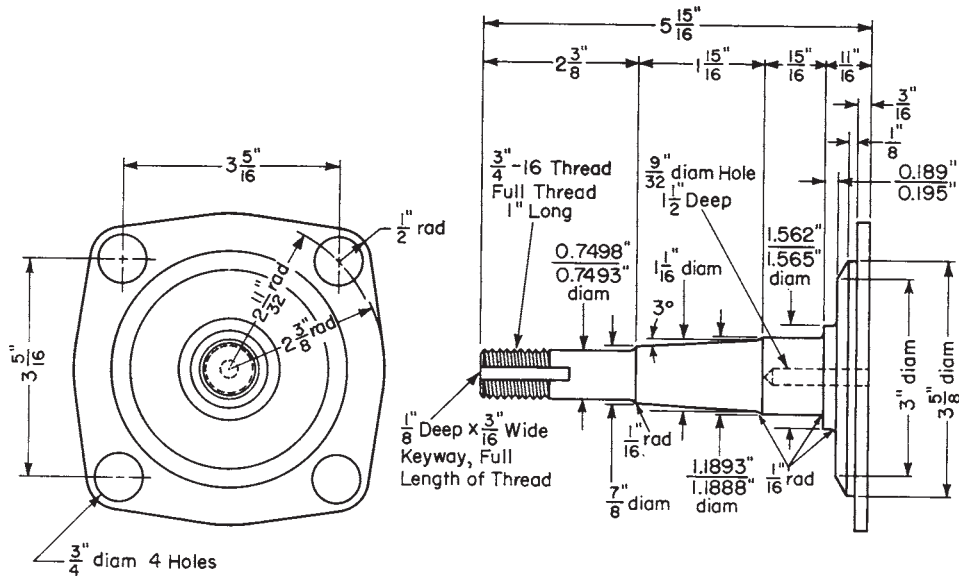
**A1. APPARATUS<sup>5</sup>**

A1.1 *Main Assembly*—The main assembly shall consist of

a special front-wheel hub and spindle assembly mounted in a thermostatically controlled air bath, and arranged so that the hub may be rotated by an electric motor through a V-belt drive. Construction shall be as shown in Fig. 2. Two heaters shall be mounted on the base of the apparatus, one continuous and the other intermittent, and controlled thermostatically.

<sup>5</sup> Available from the Falex Corp., 1020 Airpark Dr., Sugar Grove, IL 60554-9585, the Koehler Instrument Co., Inc., 1595 Sycamore Ave., Bohemia, Long Island, NY 11716, and Stanhope-Seta Limited, Park Close, Englefield Green, Egham, Surrey, England TW20 OXFORD, as Catalog No. 1900. If you are aware of alternative suppliers, please provide this information to ASTM International Headquarters. Your comments will receive careful consideration at a meeting of the responsible technical committee<sup>1</sup>, which you may attend.

NOTE A1.1—A liquid-expansion thermoregulator, with the bulb located as shown in Fig. 2, is preferred and is specified for all new machines. However, on existing machines, any other type and location that maintain



Metric Equivalents

in.	mm	in.	mm	in.	mm
5 <sup>15</sup> / <sub>16</sub>	151	1.1893	30.208	1 <sup>1</sup> / <sub>16</sub>	17.5
3 <sup>5</sup> / <sub>8</sub>	92.1	1.1888	30.196	1/2	12.7
3 <sup>5</sup> / <sub>16</sub>	84.1	1 <sup>1</sup> / <sub>16</sub>	27.0	9/32	7.14
3	76.3	1	25.4	0.195	4.95
2 <sup>3</sup> / <sub>8</sub>	60.3	1 <sup>5</sup> / <sub>16</sub>	23.8	0.189	4.80
2 <sup>1</sup> / <sub>32</sub>	59.5	7/8	22.2	3/16	4.76
1 <sup>15</sup> / <sub>16</sub>	49.2	3/4	19.1	1/8	3.18
1.565	39.75	0.7498	19.045	1/16	1.59
1.562	39.67	0.7493	19.032	16 threads/in. spacing 0.63 mm	
1 <sup>1</sup> / <sub>2</sub>	38.1				

NOTE 1—Make from Ford Motor Co., 1942 front wheel spindle No. 21A-3105 or 21A-3106, modify to dimensions shown.

FIG. A1.1 Details of Main Spindle

the specified temperature can be employed. Thermocouples are preferred for measuring both ambient (cabinet) and spindle temperatures, but a thermometer, such as an ASTM Low Distillation Thermometer having a range from 30 to 580°F or -2 to +300°C and conforming to the requirements for Thermometer 7F or 7C as prescribed in Specification E 1, has been found suitable for this purpose. For maximum accuracy, a correction factor (see Test Method E 77) should be applied. In practice this is usually disregarded.

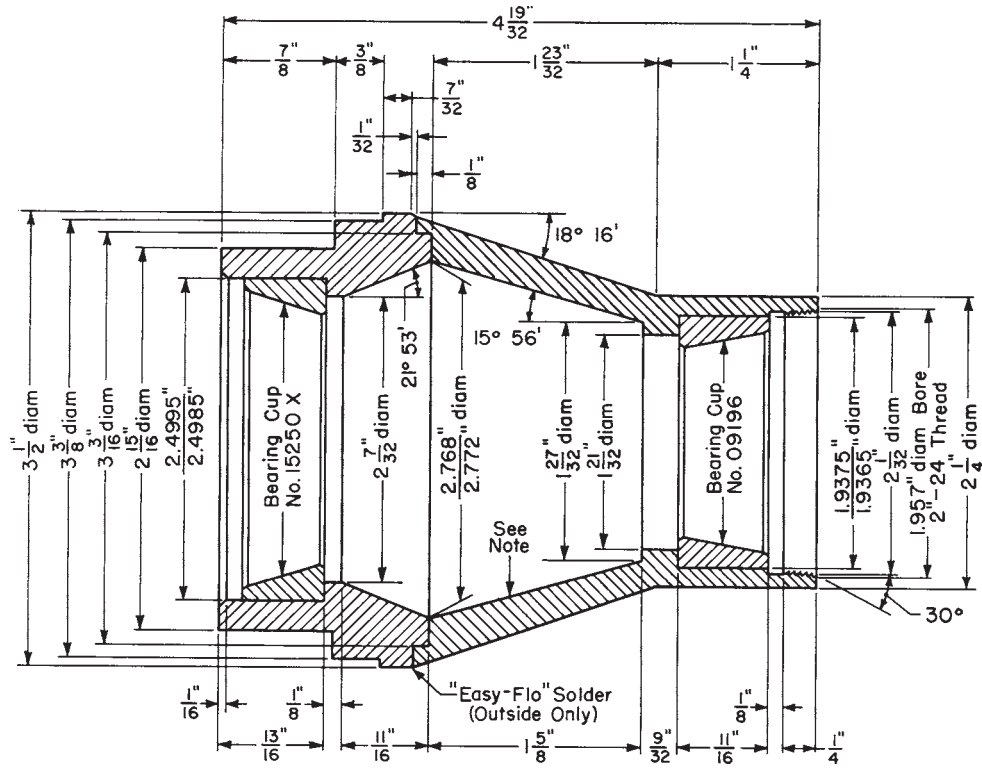
A1.2 *Bearing Spindle*—The spindle shall be constructed as shown in Fig. A1.1.

A1.3 *Bearing Hub*—The bearing hub shall be constructed as shown in Fig. A1.2.

A1.4 *Leakage Collector*—A cup-shaped ring, used as a leakage collector to catch any grease which may leak from the inner end of the hub, shall be constructed as shown in Fig. A1.3 (Note A1.2). This ring is removable, and provides a method for determining the grease loss. It slips over the spindle and is held in place by the large bearing.

NOTE A1.2—The regular grease retainer is not used, because it is desirable in a laboratory test to accelerate any leakage that may occur. Also, defective retainers are frequently found in actual service.

A1.5 *Fan*—The fan shall be constructed as shown in Fig. A1.4.

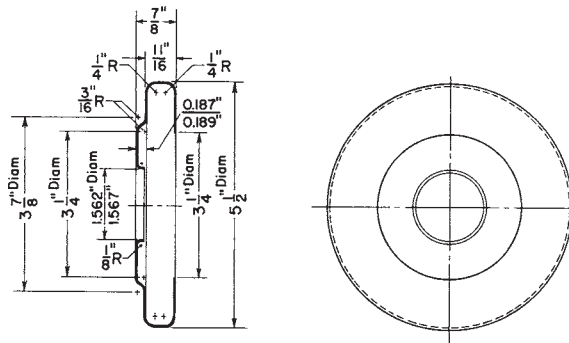


Metric Equivalents

in.	mm	in.	mm	in.	mm
4 19/32	116.7	2 1/32	51.6	7/8	22.2
3 1/2	88.9	2	50.8	1 1/16	17.5
3 3/8	85.7	1.957	49.71	3/8	9.53
3 3/16	81.0	1.9375	49.213	9/32	7.14
2 15/16	74.6	1.9365	49.187	1/4	6.35
2.772	70.41	1 27/32	46.8	7/32	5.56
2.768	70.31	1 23/32	43.7	1/8	3.18
2.4995	63.487	1 21/32	42.1	1/16	1.59
2.4985	63.462	1 5/8	41.3	1/32	0.794
2 1/4	57.2	1 1/4	31.8	24 threads/inch, spacing 1.06 mm	
2 7/32	56.4	1 3/16	30.2		

NOTE—Polish inside tapered surfaces with No. 00-100 Garnet Waterproof Paper. Do not round off sharp corners when polishing. Make both parts of hub assembly from 3 1/2-in. round cold drawn steel rod.

FIG. A1.2 Details of Bearing Hub

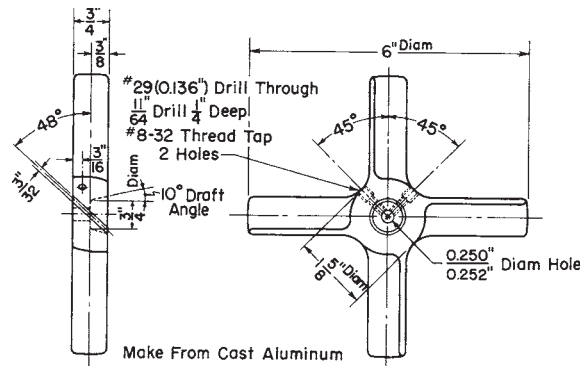


Make From Soft Aluminum

Metric Equivalents

in.	mm	in.	mm	in.	mm
5½	140	1.562	39.67	0.189	4.80
37/8	98.4	7/8	22.2	0.187	4.75
3¼	82.6	1¼/16	17.5	3/16	4.76
1.567	39.80	¼	6.35	½	3.18

FIG. A1.3 Details of Grease Collector



Make From Cast Aluminum

Metric Equivalents

in.	mm	in.	mm	in.	mm
6	152	0.252	6.40	1/64	4.37
15/8	41.3	0.250	6.35	0.136	3.45
3/4	19.1	¼	6.35	3/32	2.38
3/8	9.5	3/16	4.76	32 threads/in., spacing 0.79 mm	

FIG. A1.4 Details of Fan

A2. PRECAUTIONARY STATEMENTS

A2.1 *n*-Heptane:

- A2.1.1 (Warning—Flammable. Harmful if inhaled.)
- A2.1.2 Keep away from heat, sparks, and open flame.
- A2.1.3 Keep container closed.

- A2.1.4 Use with adequate ventilation.
- A2.1.5 Avoid prolonged breathing of vapor or spray mist.
- A2.1.6 Avoid prolonged or repeated skin contact.

*ASTM International takes no position respecting the validity of any patent rights asserted in connection with any item mentioned in this standard. Users of this standard are expressly advised that determination of the validity of any such patent rights, and the risk of infringement of such rights, are entirely their own responsibility.*

*This standard is subject to revision at any time by the responsible technical committee and must be reviewed every five years and if not revised, either reapproved or withdrawn. Your comments are invited either for revision of this standard or for additional standards and should be addressed to ASTM International Headquarters. Your comments will receive careful consideration at a meeting of the responsible technical committee, which you may attend. If you feel that your comments have not received a fair hearing you should make your views known to the ASTM Committee on Standards, at the address shown below.*

*This standard is copyrighted by ASTM International, 100 Barr Harbor Drive, PO Box C700, West Conshohocken, PA 19428-2959, United States. Individual reprints (single or multiple copies) of this standard may be obtained by contacting ASTM at the above address or at 610-832-9585 (phone), 610-832-9555 (fax), or [service@astm.org](mailto:service@astm.org) (e-mail); or through the ASTM website ([www.astm.org](http://www.astm.org)).*