



Standard Guide for Metallographic Identification of Microstructure in Cemented Carbides¹

This standard is issued under the fixed designation B657; the number immediately following the designation indicates the year of original adoption or, in the case of revision, the year of last revision. A number in parentheses indicates the year of last reapproval. A superscript epsilon (ϵ) indicates an editorial change since the last revision or reapproval.

1. Scope*

1.1 This guide covers apparatus and procedures for the metallographic identification of microstructures in cemented carbides.

1.2 *This standard does not purport to address all of the safety concerns, if any, associated with its use. It is the responsibility of the user of this standard to establish appropriate safety and health practices and determine the applicability of regulatory limitations prior to use.* Precautions applying to use of hazardous laboratory chemicals should be observed for chemicals specified in [Table 1](#).

2. Referenced Documents

2.1 *ASTM Standards:*²

[B665 Guide for Metallographic Sample Preparation of Cemented Tungsten Carbides](#)

2.2 *ISO Standard:*³

[ISO 4499 Hardmetals—Metallographic Determination of Microstructure](#)

3. Terminology

3.1 Definitions of Symbols:

Symbol	Definition
α phase	tungsten carbide
β phase	binder (for example, Co, Ni, Fe)
γ phase	carbide of a cubic lattice (for example, TiC, TaC, NbC) that may contain other carbides (for example, WC) in solid solution
η -type phases	multiple carbides of tungsten and at least one metal of the binder

4. Significance and Use

4.1 The microstructure of a cemented carbide affects the material's mechanical and physical properties. This guide is

¹ This guide is under the jurisdiction of ASTM Committee B09 on Metal Powders and Metal Powder Products and is the direct responsibility of Subcommittee B09.06 on Cemented Carbides.

Current edition approved Oct. 1, 2011. Published October 2011. Originally approved in 1979. Last previous edition approved in 2005 as B657–05. DOI: 10.1520/B0657-11.

² For referenced ASTM standards, visit the ASTM website, www.astm.org, or contact ASTM Customer Service at service@astm.org. For *Annual Book of ASTM Standards* volume information, refer to the standard's Document Summary page on the ASTM website.

³ Available from American National Standards Institute (ANSI), 25 W. 43rd St., 4th Floor, New York, NY 10036.

not intended to be used as a specification for carbide grades. Producers and users may use the microstructural information as a guide in developing their own specifications.

5. Apparatus

5.1 *Metallographic Microscope* capable of magnifications up to 1500 times.

5.2 Ordinary metallurgical laboratory equipment.

5.3 Equipment for specimen preparation as outlined in Guide [B665](#).

6. Specimen Preparation

6.1 A suitable procedure is described in Guide [B665](#).

7. Procedure

7.1 Examine the microstructure by gradual development of the phases by etching. Examples of suitable etching techniques are given in [Table 1](#). Examples of the appearance of some expected phases, in fine, medium, and coarse grain sizes, are given in [Fig. 1](#).

7.2 Determine the presence of η -type phases by lightly etching half the section with Technique 1 (see [Table 1](#)). Examine the entire section at low magnification and, if necessary, at magnifications up to 1500 times. Phases of η -type are colored orange to brown in the etched portion, and white to light gray in the unetched portion. γ -Phase may also etch lightly and appear brownish in the etched portion, but will have a brown/gold color even in the unetched portion, thereby differentiating it from η -phase. The other phases remain unetched. Etching by Technique 1 does not preclude subsequent etching by Technique 2. Note and record the existence of η -type phases and their distribution.

7.3 Determine the presence of γ phases by etching with Technique 2 ([Table 1](#)). This phase appears light yellowish brown and has a typically rounded shape (see [Fig. 1](#)). Examine the etched section and note and record the existence of a γ phase.

7.4 Determine the presence of α phase in the same etched specimen as in [7.3](#). The α phase appears gray, angular (idiomorphic), and straight-slided (see [Fig. 2](#)). Examine the etched section and note and record the presence of α phase.

*A Summary of Changes section appears at the end of this standard

TABLE 1 Etching Techniques

NOTE 1—The separate solutions of potassium hexacyanoferrate (III) and potassium or sodium hydroxide may be stored for a long time, but must be freshly mixed each day when used.

Etching Technique	Composition of Etchants	Conditions of Etching	Objective of Etching
1	Freshly prepared mixture of equal quantities of 10 %(mass/mass) aqueous solutions of $K_3Fe(CN)_6$ (III) (potassium ferricyanide) and potassium or sodium hydroxide	Etch at approximately 20°C for 2 to 10 s. Flush the test-piece section with water immediately, without removing the oxide layer. Dry the surface carefully with acetone or alcohol without wiping.	Identification of η phase
2	A Same as 1A	Etch at approximately 20°C for 2 to 4 min.	Identification of α , β , and γ phases

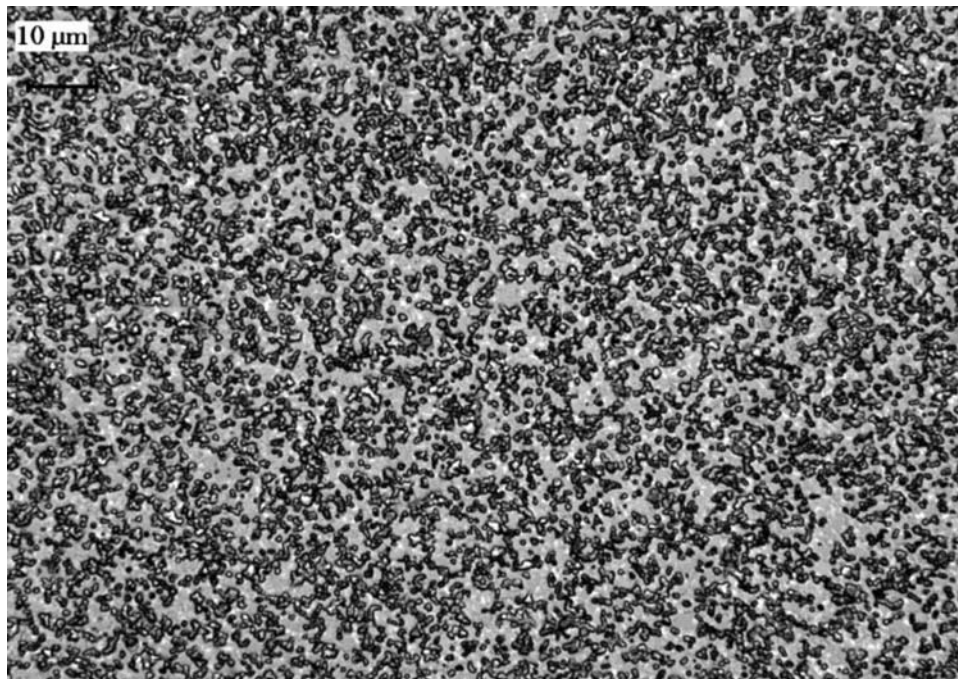


FIG. 1 γ Phase Fine, All 8.5%Co, 5.9% TiC, 5.5% TaC, 2.4% NbC, balance WC

7.5 Identify the β phase in the same etched specimen as 7.3 and 7.4. This phase remains white and is usually the continuous, interstitial phase between the α and γ grains.

NOTE 1—This procedure follows essentially ISO 4499.

8. Report

8.1 The report shall include complete identification of the specimen and the phases present.

9. Keywords

9.1 cemented carbides; hardmetals; microstructure; powder metallurgy

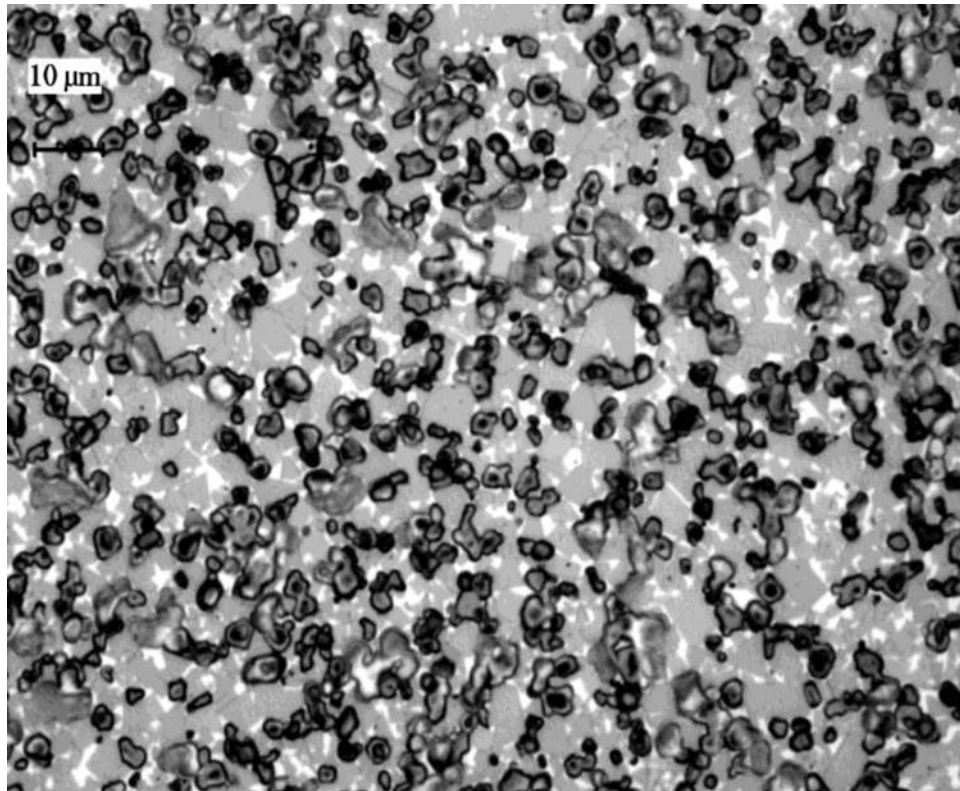


FIG. 1 γ Phase Medium (continued)

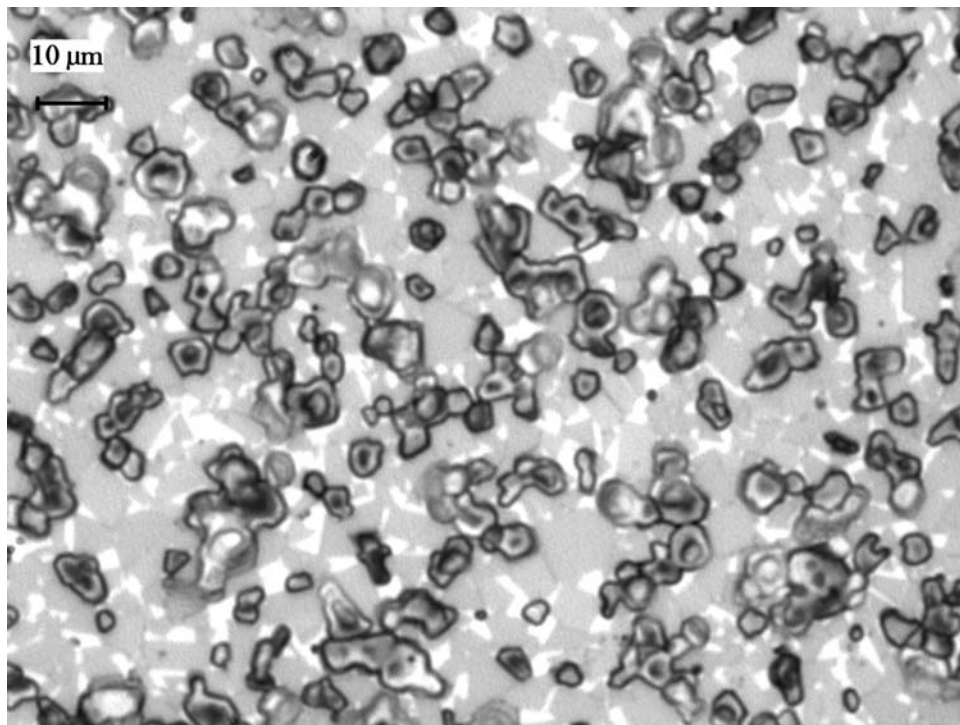


FIG. 1 γ Phase Coarse (continued), All 8.5%Co, 5.9% TiC, 5.5% TaC, 2.4% NbC, balance WC (continued)

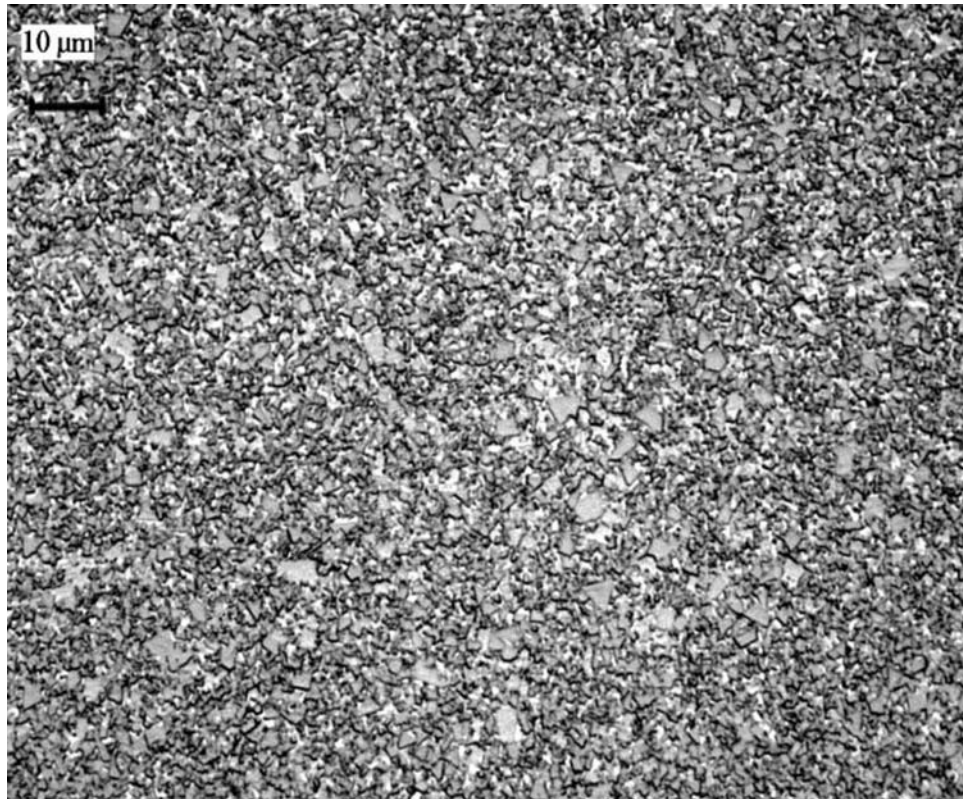


FIG. 2 α Phase Fine, All 10% cobalt, balance WC



FIG. 2 α Phase Medium (continued)

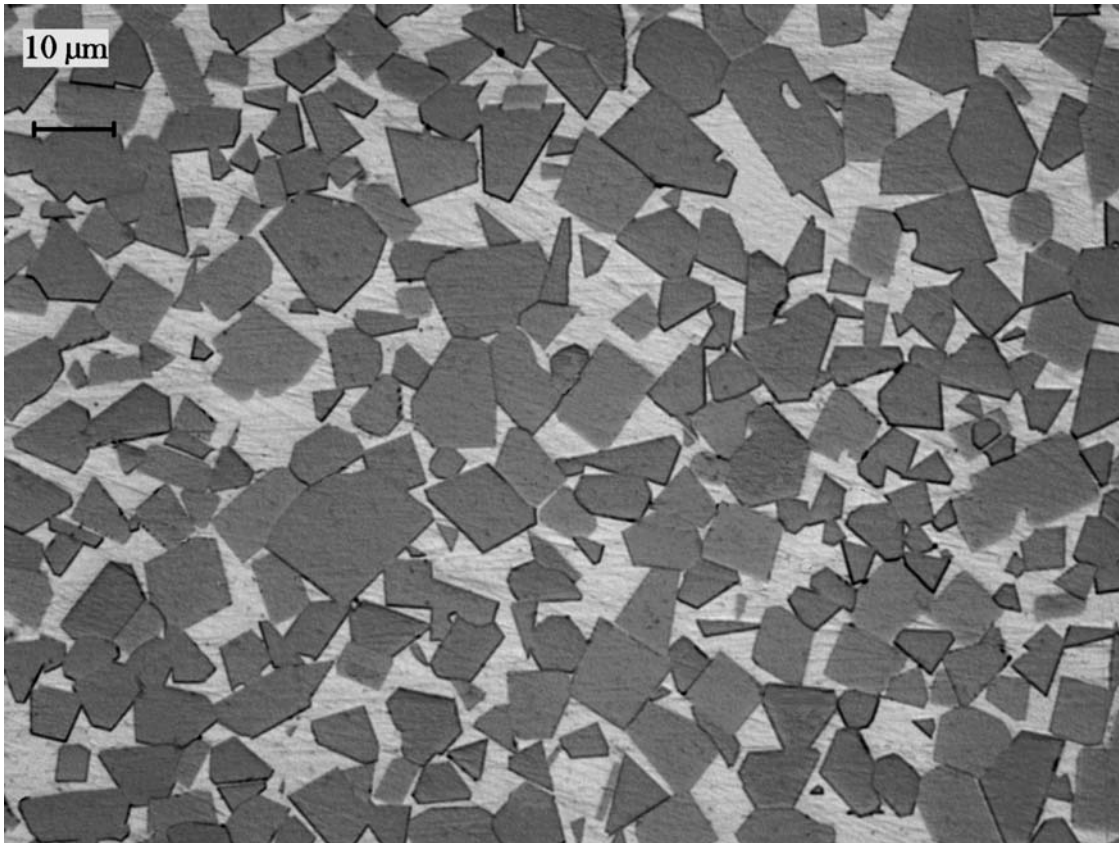


FIG. 2 α Phase Coarse (continued), All 10% cobalt, balance WC (continued)

SUMMARY OF CHANGES

Committee B09 has identified the location of selected changes to this standard since the last issue (B657 – 05) that may impact the use of this standard. (Approved October 2011.)

- (1) Replaced original micrographs with new digital images containing micron bars. (2) The chemical composition of the pictured materials have been listed in the “Figure” headings.”

ASTM International takes no position respecting the validity of any patent rights asserted in connection with any item mentioned in this standard. Users of this standard are expressly advised that determination of the validity of any such patent rights, and the risk of infringement of such rights, are entirely their own responsibility.

This standard is subject to revision at any time by the responsible technical committee and must be reviewed every five years and if not revised, either reapproved or withdrawn. Your comments are invited either for revision of this standard or for additional standards and should be addressed to ASTM International Headquarters. Your comments will receive careful consideration at a meeting of the responsible technical committee, which you may attend. If you feel that your comments have not received a fair hearing you should make your views known to the ASTM Committee on Standards, at the address shown below.

This standard is copyrighted by ASTM International, 100 Barr Harbor Drive, PO Box C700, West Conshohocken, PA 19428-2959, United States. Individual reprints (single or multiple copies) of this standard may be obtained by contacting ASTM at the above address or at 610-832-9585 (phone), 610-832-9555 (fax), or service@astm.org (e-mail); or through the ASTM website (www.astm.org). Permission rights to photocopy the standard may also be secured from the Copyright Clearance Center, 222 Rosewood Drive, Danvers, MA 01923, Tel: (978) 646-2600; http://www.copyright.com/